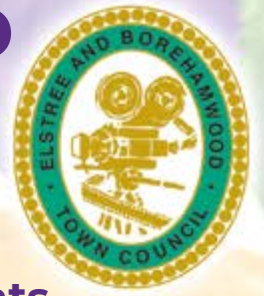


ISSUE 38

SUMMER 2020

# ELSTREE & BOREHAMWOOD **TOWN CRIER**



The magazine for Elstree & Borehamwood residents

Thank you

# NHS



# Hear ye! Hear ye!

## Letter from the Mayor...

My thoughts are with everyone affected by the coronavirus pandemic.

The present situation we find ourselves in and the impact on daily living and the economy is unprecedented in recent times.

I would like to thank not only residents for complying with the measures introduced by the government in response to the Covid-19 pandemic, but especially to those that work on the front line to keep us healthy, fed and safe.

Quite rightly much is said about our fantastic NHS staff working day and night in difficult conditions to save lives in the battle against this virus. We cannot thank them enough for what they do.

We must also remember the people who work in food and medication production and delivery. The hard working supermarket staff who ensure the shelves are full so we can feed our families.

We must not forget the emergency services and the professionals who make sure our utilities work efficiently. We must also not take for granted council staff turning up for work every day to provide the vital services needed such as collecting our waste and caring for vulnerable children. These people cannot self-isolate to do their jobs.

I cannot praise enough our residents and businesses for pulling together to help the more vulnerable members of our community.

Let us all maintain this community spirit and continue to help those who are self-isolating, the elderly, disabled or those with underlying conditions that put them at risk.

These are challenging times, but I am proud of the response to those challenges by the community. So let's keep calm and carry on staying at home thereby protecting our NHS and saving lives.



# What's inside

- Hollywood in Hertfordshire ..... Page 3
- Elstree University Technical College ..... Page 4
- School News ..... Page 5 - 9
- School Governors and Gratitude ..... Page 10
- Mary Hanson ..... Page 11
- Music in the Wood and VE75 Celebration ..... Page 12 - 13
- Remembering Srutidharma Das and Teddy's Trails book ..... Page 14
- Youth Makes Music ..... Page 15 - 16
- Rotary Club ..... Page 17
- Leedcliffe Big Local ..... Page 18
- Woodcock Hill Village Green ..... Page 19
- Allum Lane Fields Association ..... Page 20
- Sky Studio Complex ..... Page 20 - 21
- Wild Garlic Pesto Recipe and Garden Craft Society ..... Page 22
- Goods for Good ..... Page 23
- Foodbank and Rotary Club of Elstree & Borehamwood ..... Page 24
- Camp Unity and Diversity 2020 ..... Page 25
- Corona Care Challenge and Virtual Concert ..... Page 26
- Who do I talk to about ..... Page 27
- Covid-19 Advice ..... Page 28 - 31
- Annual Report ..... Page 32 - 34



**Cllr Simon Rubner**  
**Mayor of Elstree and Borehamwood**  
 For Mayoral enquiries please email the Mayor's Secretary at  
[admin@elstreeborehamwood-tc.gov.uk](mailto:admin@elstreeborehamwood-tc.gov.uk)



## Coronavirus (Covid-19): What you need to do

### Stay alert

We can all help control the virus if we all stay alert. This means you must:

- Stay at home as much as possible;
- Work from home if you can;
- Limit contact with other people;
- Keep your distance if you go out (two metres apart where possible);
- Wash your hands regularly.

Self-isolate if you or anyone in your household has symptoms.

Front cover by Valentina Salter.

Advertising in the Town Crier is welcomed, with priority given to local, reputable businesses. We will limit ad space to contribute towards costs only – Elstree and Borehamwood Town Crier is not a profit making enterprise.

90mm x 128mm

**£90**  
+VAT

### How to supply adverts

90mm x 96mm

Call us to book a space in the next edition. Any artwork must be submitted in pdf or jpg format and correctly sized for the space required as the illustration shows.

**£75**  
+VAT

Discounts available for annual advertising – please call to discuss.

64mm x 90mm

**£50**  
+VAT

64mm x 45mm

**£25**  
+VAT

While we take reasonable steps to check our advertisers are bona fide, readers should carry out their own checks before entering into any contract or arrangement.

# Hollywood in Hertfordshire

## (MGM British Studios)

If ever there was a 'Rolls Royce' of British film studios it was MGM British, which once stood on 115 acres off Elstree Way, where it produced world-famous films attracting many of Hollywood's most legendary stars.

It was built in 1936 as Amalgamated Studios, but never opened. The facility was purchased by Lord Rank and, with the impending onset of war, it was leased to the Ministry of Works.

In 1944 MGM decided to invest in UK film production and purchased the studio plus additional acreage. After its modernisation, MGM launched a film production programme.



The next 25- plus years saw a steady stream of stars in MGM films and those of other production companies, creating such well-remembered films as *Ivanhoe*, *Mogambo*, *The Man Who Never Was*, *Inn of the Sixth Happiness*, *Village of the Damned*, *The VIPs*, *The Dirty Dozen*, *2001: A Space Odyssey* and *Where Eagles Dare*, and TV series such as *Danger Man*, *The Prisoner* and *UFO*.

In 1969 - while a crew was on location in Singapore preparing to start work on *Man's Fate* under Oscar-winning Hollywood director Fred Zinnemann - filming was suddenly cancelled, and the MGM British studios closed in early 1970. MGM shared premises with EMI at what is now Elstree Studios until 1973 when it withdrew completely from the UK production scene.



This year, 2020, is the 50th anniversary of the sudden closure of MGM British Studios. Before the outbreak of the coronavirus pandemic, Elstree Screen Heritage had prepared plans to celebrate the many achievements of the studio, including a summer-long exhibition at Elstree & Borehamwood Museum.

These plans are now on hold but we will soon be publishing Paul Welsh's long-awaited book *MGM British Studios (Hollywood in Hertfordshire)*. Over 300 pages long and containing over 400 photos and drawings, most never before published, this also tells the stories of the talented staff who worked behind the cameras. Many of these men and women belonged to the local 'film families' of Elstree and Borehamwood.

The book costs £20 (plus postage and packing).

**For more details about the book and how you can purchase your copy, please visit <http://elstreescreenheritage.org/category/news/>**

**Bob Redman**





## Elstree University Technical College: 2020 so far

At the start of this year, we are already celebrating the many achievements of our students and staff who have worked together on special events for our community, such as our 'Bring It On' musical performance, open evening and filming content with our industry partners, Apples and Snakes.

### Bring It On

For three sold-out nights, EUTC staff and students produced and performed 'Bring It On: The Musical' the hit cheerleading musical featuring lyrics written by Lin-Manuel Miranda. Thank you to everyone that took part in the show, from the production arts students who built the sets, to the audience of parents, friends and clients who bought tickets to watch the show. As a University Technical College with a specialism in creative arts, multimedia and technical production, we are proud to showcase the industry-standard talent of our students on stage and behind the scenes at performances such as these.



### Open evening

In January, we opened our doors to the local community of parents and prospective students at our EUTC special event evening. During the event, those that attended were given the opportunity to meet the principal, tour our site, experience our incredible equipment and engage with students, staff and alumni. We offer a wide range of core and specialist arts subjects such as Media Production, Film, Music Performance, Performing Arts, Visual Arts, Set Design, Prop Making, Light and Sound Installation, Production Hair and Makeup, and more. If you missed our open evening but are still interested in joining our college, visit the EUTC website for more information on admissions for the 2020/21 academic year: <https://www.elstreeutc.co.uk>

### Online learning

In these unprecedented times, the government has requested that all students who can be kept at home should be. However, as a creative arts and multimedia specialist college, here at eutc we are taking the opportunity to push forward the use of technology in education to support distance learning. Our staff are leading the way in using online programmes to deliver lesson content and resources to our students at home who will be following a home learning timetable. Teachers will be delivering a variety of content including, but not limited to: worksheets, websites, podcasts, vlogs, blogs, videos, articles, quizzes, revision materials, past papers and exam board specific questions. Every EUTC learner is also having online lessons with their teachers through video conferencing so that our specialist staff can continue to connect with young people learning in their homes. EUTC already uses online apps for education so we are ready to rise to the challenge of distance learning and we are keen to innovate ways of connecting and providing specialist training online. We are also using our social media pages and our website to share links and ideas for staying inspired and keeping healthy and well. We wish all in our community good health at this time.



# School News

## St Teresa's Catholic Primary School

### Spring term at St Teresa's

Our spring term started with an earlier than expected visit from Ofsted and we are delighted to report that St Teresa's "...continues to be a good school." Our report says that, "Pupils like attending St Teresa's. Pupils feel happy and safe in school. Teachers have high expectations of what pupils can achieve... The school's strong values, such as having respect for others, are evident throughout the school. Pupils enjoy good relationships with staff. There is a strong sense of community within the school and working together is important to all. Pupils' behaviour is positive in lessons and around school... Pupils, parents, carers and staff are positive about the work at the school. The overwhelming majority of parents would recommend the school to others. Many parents commented about how caring and nurturing they found the school to be. They reported that their children are happy at the school."

Thank you to the St Teresa's school community for working together to make our school the best that we can be.

#### Other events that happened at St Teresa's during the spring term include:

- Our school council visiting the Hertsmere Borough Council chamber, meeting Mayor Plancey and finding out about how the council runs and the role of the mayor.



- Our maths day, making maths fun - when our pupils came to school dressed in mathematical costumes and our parents joined us to play some games involving maths.
- Our World Book Day when we marked *The Year of The Word*, celebrating, living and sharing the word of God, in the Bible. Parents joined their children in completing art activities based on St Matthew's gospel.
- Our Year 4, 5 and 6 pupils took part in workshops led by The Samaritans - with the focus on "*It's Good to Talk*".
- The whole school took part in Safer Internet Day drama workshops led by Flip Theatre, to learn how to be safe when using the internet and social media.



Like all of the other local schools, we had other events planned for the spring term but with the coronavirus school life took an unexpected turn and we ended up postponing events and spending time teaching children about hygiene and how to access their learning from home. We appreciate all that our parents are doing to support this learning at home and hope that as a family you can enjoy this time together. We look forward to when we will be able to open our school gates again and warmly welcome back our pupils and their families.

## Don't forget our little heroes

All schools work to support and promote their pupils personal development and wellbeing. However, with the current Covid-19 situation, we need to recognise the impact this will have on every child. They are having to stay indoors more than they have ever known in their lives. Their worlds have been turned upside down. They have to follow rules that they haven't known before - a life that they couldn't have imagined. They hear adults talking about those who are unwell and hear the news reporting so many deaths. Yet, everyday they get up and carry on - painting pictures and putting messages on windows for the "heroes" out in the world. Let us remember that all of these children are heroes too!

Finally a huge thank you to all the key workers in our local community who are providing the vital services to keep us all going, -particularly the front line NHS staff. And a big thank you to all of the staff in our schools who are providing the essential childcare for our key worker parents - you too are heroes.

Take care and stay safe everyone.

*Ms Teresa McBride*

# Woodlands Primary School

Woodlands has had yet another busy term, improving areas of the school, holding a careers day for our value of 'Be Ambitious' and, of course, adapting to the needs of staying safe during this time.

## Reading areas

Each class was given the challenge of developing their reading area for children to use. The staff worked extremely hard to revamp or create an area that the children can enjoy their love of reading in:



**Nursery** staff have created a cosy fantasy-themed book area for the children to look at books and have books read to them. The children absolutely love the space – as do the adults!



**Reception** have updated their book area, ensuring that the books are easily accessible, and displaying photographs showing the children reading in a variety of unusual places.

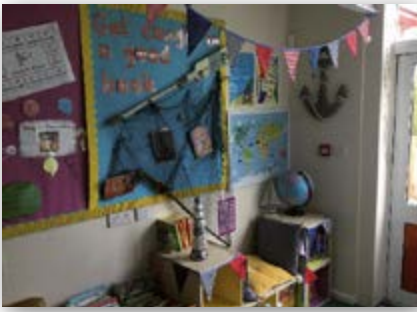


cushions.

**Year One's** garden-themed book area encourages reading and phonics practice. The children, as well as the bear, enjoy the space!



**Year Two** have incorporated a superheroes theme into their area with a new rug and comfortable



In **Year Three**, the children are being encouraged to 'Get caught in a good book!' Their nautical themed area has made good use of the space and the children love it!

**Year Four** were the winners of our book area competition after creating a Dr Suess-inspired book area. The corner has a thick pile of rug that the children love and quotes by the children about their favourite books. Well done Mr Kenny and class.



**Year Five** created an American diner in their area –complete with a jukebox book case, vinyls and lush velour chair covers.



**Year Six** has created a coffee shop-style area with cushions to be added for the pupils. Their work is on the books they are enjoying and reading.

### Other news:

We are currently in the process of revamping our outdoor nursery area and look forward to sharing photographs of this with you in the next edition of the Town Crier. We would like to thank PR Palettes in Waltham Abbey who very kindly donated and delivered a number of palettes free of charge.

As mentioned above, we had a fabulous careers day last half term where the children dressed up as what they aspire to become when they are older. During the afternoon, we had parents and members of the community in the hall talking to the children in small groups about what their jobs entail and how they got into their chosen careers. We are sending a massive thanks to all of those who volunteered to help.

Finally, during these difficult times, please remember to stay safe and keep smiling.



# Saffron Green Primary School

## Our spring term

The beginning of the spring term at Saffron Green was an extremely industrious one.

The children enjoyed their annual "World Book Week" immensely. The week, organised by our English leader, Mrs Arbi, was full of creative activities. The children's favourite part of the week was "Dress-Up Day" which was hugely popular. JK Rowling featured strongly this year with many children choosing to be Harry Potter or one of the many characters from the hugely popular books series. Roald Dahl continued to be a firm favourite, as did many Disney stories. The children spent the week absorbed in stories, reading them, writing them and performing them. Our wonderful librarian, Karen Storms, spent her whole library day reading exciting stories to the smiling faces of children from every class. The "Bringing Books to Life Dance Workshop" was particularly enjoyed and all the children were able to express their stories through the medium of dance. All the class rooms had their doors decorated in the style of book covers which made the whole school look a literary treat. A huge thank you to Miss Arbi and all the staff for putting this week together. At the end of the week we reminded children that the joy of books can be explored every other week of the year too!



Earlier in the term, Mrs Demeo, our PSHE (personal, social and health education) leader organised and ran our "Feeling Good Talent Show". As always the children shone. They wowed us with their amazing performances. Leading up to the event they practiced their acts daily and all their hard work paid off during the final performance. It was an eclectic mix of acts including: dance troupes, magicians, singers, piano players and even acrobats. The show was a sell-out. May I say thank you so much to all the parents, family members and carers who attended this wonderful event. A huge thank you Mrs Demeo too!

**Linda Storey**  
(Headteacher)





# St Nicolas Primary School

## Feeling Good week at St Nicholas School in Elstree

Our school was fortunate to receive funding following an application to the integrated health and care commissioning team. The monies received were used to support our school's project during 'Feel Good Week.' Our project title was 'Developing physical well-being and relationships by connecting with the outdoors.'

The younger children listened to the story of the "stick man" and collected sticks and made their own stick people. They also learnt how to make a fire.

The older children played outdoor team games with wooden skis and plastic tubing as well as making fires.

This project complemented the school's work on mental health and well-being, as well as the work of Forest School.



# Little Angels Preschool

Little Angels Preschool is a Charity run preschool in Borehamwood Baptist Church Furzehill Road, the majority of our children are from disadvantaged families, most are funded by the government incentive to close the poverty gap.

We would like to thank Hertfordshire Community Foundation for providing us with a Grant to provide home learning packs to all our children during lock-down.

Those children that are at a disadvantage have been proven to do less well than their peers. As we are not able to provide the care for our children in the setting during the covid19 lock-down we were concerned that the gap for those children will start to open again. We try really hard to provide ideas for our children to use at home, and support our parents but because they are from low income families some will not have the play

resources available to them to support their learning, specially at a time that is putting financial strain on the whole population and most are struggling to feed their families without having to provide resources for their learning too.

The money from the grant has allowed us to use the funds to provide packs for the children which provide the perfect learning opportunities for our children to support their development and hopefully stabilise the poverty gap during lock-down.

It also provides joy at a difficult time for our children who we know are missing Pre-school and send them a reminder that we are thinking and care about every single one of them.

*Sophie Perkins*



## You've got a friend in me

This is not just about Buzz and Woody but about what we all need at the moment. As a school governor, we are a particular type of friend. We are there, not just to support and advise, but also to challenge. Governors are critical friends focusing on the strategic direction of the school and not straying into interfering in the everyday and operational life of the school.



Ofsted regards well a school that has a body of governors that have a range of skills and experiences. The contribution that parents and people with children can make is invaluable. We have to be grounded in the everyday experiences of people.

One of the most challenging roles of being a governor is understanding the annual budget, which means being familiar with spreadsheets. As a governor myself, I can understand them but do not have the insight that a trained accountant or someone familiar with finance is able to bring.

Governors have the responsibility of appointing of every new person coming to work in their school. Consequently, a knowledge of personal issues is of value. We are lucky in having the resources and support from Herts for Learning that all Hertfordshire schools buy into. Schools have to fulfil many requirements and having a governor with experience in finding their way through these mine-fields would be an asset.

Not surprisingly, having governors with a background of working in schools is also a great advantage. They can help keep other governors on track and ensure that what we are asking or demanding is reasonable. If they come from another school, then this has the added advantage of providing an insight into other ways of doing things.

Item	Price	Quantity	Total
Copy paper	£2.49	20	£49.80
Post-It Notes	£5.99	10	£59.90
Stapler	£7.99	5	£39.95
Paper punch	£11.90	15	£178.50
Highlighter pen	£1.99	50	£99.50
<b>TOTAL COST OF ORDER</b>			<b>£427.65</b>
<b>AVERAGE PRICE</b>			<b>£8.07</b>

***If you are interested in becoming a school governor and helping to make a difference, contact your local school or go to the website; <https://www.hertfordshire.gov.uk/about-the-council/volunteering/schools-and-youth-work/school-governor/volunteer-as-a-school-governor.aspx>***

***If you want to know more about being a governor contact Geoff Strack on 020 8386 3151 or email [geoff.strack@ntlworld.com](mailto:geoff.strack@ntlworld.com)***

**Geoff Strack**

## Gratitude

Gratitude, a local Borehamwood charity, has won the High Sheriff's Award for 2020. The award was presented by the current High Sheriff, Sarah Beasley, at County Hall on Thursday 12 March 2020.

Gratitude is all about sustainability and tackling food poverty on the one hand, and combining thrift, recycling and sharing in the community on the other. We strive towards being a waste-free community.

Gratitude rescues good quality food and non-food items that would otherwise end up in landfill and redistributes it to the needy in the local community. We run a 364-days a year "pantry" from which members can select and take food items collected from supermarkets and shops around Borehamwood. All collections and stocking is done by a dedicated team of volunteers.

Our mission is to promote awareness of social and environmental responsibilities and to encourage a mindful and healthy lifestyle, by getting our members involved in various projects that can help them to see the difference that an individual can make. Every project we undertake keeps the tenets of "reduce, reuse and recycle" at its heart.

We at Gratitude supply fruit to schools, knit for children in hospitals and elderly in care homes, wrap and donate hundreds of Mother's Day gifts to single mothers in social shelters, and cook and share a healthy three course vegetarian meal every Wednesday with members of the community. All this is done with goods saved from waste. The charity relies entirely on voluntary contributions from its members and grants from various organisations in its endeavour to break the food poverty cycle and at the same time help the environment.



## Town Flag competition - Deadline extended

The closing date for entries for the competition to design a town flag for Elstree and Borehamwood has been extended to 30 June, so it is not too late to send in your suggestion.

For full details and an entry form, visit the Town Council's website at [www.elstreeborehamwood-tc.gov.uk](http://www.elstreeborehamwood-tc.gov.uk)



# Mary Hanson

15/02/1933 -11/04/2020

Mary was a true local treasure, having lived her whole life in the Borehamwood area, after her parents, Elsie and Bert moved from Huddersfield, living above the shop they took over in Shenley Road. After selling the shop she lived in Tennison Avenue before moving into the Radley Care Home, where she sadly passed away peacefully on 11 April this year.



Mary in the shop in 1965



Community Award September 2017 with then Mayor, Cllr. Eric Silver

Following on from her father, she ran the local 'sweet shop' and later tea room in Shenley Road, which is fondly remembered by generations of Borehamwood youth for delicious ice cream and other treats.

She often regaled those who knew her with tales of being one of the first Brownies in a pack run by the sister of Sir Percy Everett and meeting in a hut at Shopwick Place.

She was a very active member of the community; a founder member of the Borehamwood History Society, along with Alan and Ann Lawrence, and first Chair. This became the Elstree and Borehamwood Museum where Mary became a volunteer, and which gave her an opportunity for further regaling of anyone who would listen to her historical reminiscences. Mary wrote a booklet "The Birth of All Saints' Parish, Boreham Wood" which is available from the Museum website.



Mary at the museum's retailing exhibition



Mary on horseback.

Originally a member of Aldenham Rotary, when that failed she joined the Rotary Club of Elstree & Borehamwood in 2001 (twelve years before me). Even before the days when women were admitted to Rotary, she accompanied her dad, Bert Hanson all over the world to conferences when he was president.

In St. Albans, Mary is fondly remembered by many of the cathedral guides and for the active part she played as a guide in cathedral life.

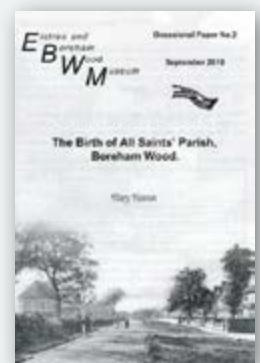
She was a dog lover, enjoying regular walks on Woodcock Hill with her labradors and was a stalwart supporter of the cause to obtain village green status. She had postcards printed with a photo of the hill for sale in her shop to raise money for the campaign. She wrote a short history of Woodcock Hill.

It was an honour to have known Mary.  
May she rest in peace.

**Clive Butchins**



Mary in Radley care home with Dolly. .



Cover of Booklet "The Birth of All Saints' Parish, Boreham Wood".

# Music in the wood

## Borehamwood Brass 2020

Borehamwood Brass is your local community band that performs a wide musical repertoire on the standard set of brass band instruments.

The band has been very busy since Christmas and was due to play for the Elstree and Borehamwood mayor's charity concert at Fairway Hall in aid of the Peace Hospice.

Given the extent of the Coronavirus (Covid-19) outbreak across the world, and the government ceasing all gatherings and events, all our concerts planned in April to July have been postponed.

For the foreseeable future the band has suspended all rehearsals to comply with all the restrictions that are in place.

**For more information about Borehamwood Brass, and how to join, please look at the band's web site and Facebook page, or please contact Andrew Grady on 07802 736628 or email borehamwoodbrass@hotmail.com**

**Web Site [www.borehamwoodbrass.org.uk](http://www.borehamwoodbrass.org.uk) - Facebook [www.facebook.com/borehamwoodbrass](http://www.facebook.com/borehamwoodbrass) - Twitter: [www.twitter.com/BWoodbrass](http://www.twitter.com/BWoodbrass)**



## A Year of Culture from Elstree Mozart Players



Elstree Mozart Players were founded by Derek Holland, who is currently the Musical Director of Borehamwood Brass and first appeared at festival concerts with the band as long ago as 1993.

The local community supported this idea, championed by Councillor. Pat Strack, and Andrew Grady. Others, including The Revd Tim Warr from All Saints Church, and the Town Council, Entertainments Committee, made this venture a success.

The orchestra is drawn from a group of specially chosen semi-professional and professional musicians from the locality, with the aim of performing a wide range of orchestral and choral music for the local community to enjoy.

The 2020 season started on Saturday 29 February 2020 and featured a 'Scratch Choral Concert'.

This concert featured Vivaldi's 'Gloria', plus 'Zadok the Priest'. The programme also included Mozart's Clarinet Concerto and Tchaikovsky's Rococo Variations.

Soloists for the evening were internationally renowned sopranos Janice Watson and Barbara Shapiro.

The concert also featured Alisa Franklin on cello performing Tchaikovsky Rococo Variations, plus Stephen Randall performing on clarinet performing Mozart's Clarinet Concerto.

Given the extent of the Coronavirus (COVID-19) outbreak across the world, and the government ceasing all gatherings and closure of theatres and bars all of the events planned have been postponed.

**For anyone requiring more information about the orchestra, then**

**please contact either Pat Strack on 020 8386 3151 or Andrew Grady on 07802 736628, or email: [elstremozartplayers@outlook.com](mailto:elstremozartplayers@outlook.com)**

**Andrew Grady**



### 1 November Concert Programme

Rossini William Tell

Elgar Cello concerto with Anna Maclean from the Purcell School

Pomp and circumstance with Borehamwood Brass

Mozart Flute and harp concerto with Kate Walsh and Aideen Mc Hugh

Tchaikovsky Capriccio Italien with the extra brass!

## 2020 summer band concerts in Meadow Park

The extent of the coronavirus (Covid-19) outbreak across the world, and the government's forbidding of all gatherings, has resulted in the closure of all planned current events in the UK for the time being. Whether such events can take place in the future is uncertain.

If things improve, it is hoped that four brass concerts will take place throughout August and September, so that townsfolk can enjoy these popular free Sunday afternoon concerts in Meadow Park, Borehamwood.

The Band Stand Project Committee, working with the London and Home Counties Brass Band Association, booked four Hertfordshire brass bands to present four separate concerts for all to enjoy.

The committee, Andrew Grady from Borehamwood Brass, local musician Nick Male, Norman Shuker from Elstree and Borehamwood Rotary Club, and town councillor Pat Strack, planned a season of four concerts. All the committee are Rotarians.

### Performance shelter update

Hertsmere Borough Council and Elstree and Borehamwood Town Council continue to work with the two Rotary Clubs to provide a structure that will be fit for a range of performers. The electrical box has been installed and a mound formed to define the space.

An announcement will be made about the permanent structure by EBTC in the next few weeks.



## Virtual 75 anniversary of VE Day Friday 8 May 2020

The Studio Rotary Club came up with a novel idea to present a 'virtual celebration event' for every-one to enjoy in the safety of their own homes, because of the COVID-19 lock down

The club has a variety of members with many different skill sets. One member works for an events company that streams large events and conferences.

The club has drawn on this resource which enable this live streamed event to take place via You Tube on Friday 8 May 2020. This 'live stream video presentation', was organised in conjunction with Elstree and Borehamwood Town Council and Woodcock Hill Village Green.

All videos were pre-recorded in participants homes, to comply with the strict lock down measures in place, then edited by the club's publicity team to present as a live stream.

The live stream commenced at 2.45pm to help the public celebrate the 75th Anniversary of VE Day. The president of the Studios Rotary Club of Elstree and Borehamwood, Nick Male introduced this presentation.

Both the Mayor of Elstree and Borehamwood, Cllr. Simon Rubner and leader of Hertsmere Borough Council, Cllr Morris Bright made speeches. The video included reading of the exhortation, by Anthony Wass, of The Royal British Legion.

Two members of the club, Andrew Grady, and Piper George MacGregor, in keeping with the rest of the country were able to perform as per national guidelines set out to celebrate the anniversary.

Andrew performed at 2.55pm the 'Last Post' and at 3pm George played 'The Battle's Over' and then a special work specially commissioned for the occasion VE 75.

Special thanks go to the Torpedo Factory Group for providing the technical support for this event.

You Tube link: <https://youtu.be/ei0xiHvsWPU>



Andrew Grady performed the last post, whereas George MacGregor played the Battle's Over and VE75

# Remembering Srutidharma Das

## 1958-2020

My thoughts about my very dear friend Sruti (he told me that I could call him that) - my friendship and love for him was very special.

I first met him in 2008 when I was invited to one of the big festivals at Bhaktivedanta Manor. I was the Mayor of Hertsmeire that year and from that day on I had a friendship that was the most extraordinary in my life, and which I felt as soon as we met.

He came to my house on three occasions with many other friends from the Manor. One time was with Radhanath Swami, who came to talk about the way that we live our lives, and what his journey was like until he found India. He told us many true stories that happened to him. We had an exceptional evening. The talk was most enjoyable and my friends and I loved it.

Being with both of these spiritual friends was exciting. Just to be in the company of such learned men was so inspiring. My only wish is that our friendship could have been for a longer period of time; twelve years just wasn't long enough.

When my family came over from Israel to see me, I asked Sruti if they could go to the Manor to meet him. The answer came back very swiftly: it would be a pleasure. As soon as they met Sruti they loved him when they saw what a spiritual and gentle person he was. He played music on a keyboard and my grandson Alon played a drum, his wife Hadas played the guitar and my grandson Yaari who was 18 months old danced. We all had a wonderful time.

I have spent many happy, enjoyable and spiritual times with my very dear friend. I was invited to every festival that Bhaktivedanta Manor celebrated. I felt that somewhere in our lives we were meant to be such good friends. I asked my friends at the manor about a holiday that I was thinking of taking to India and, yes, Sruti helped to organize this holiday of a lifetime for my friend Lesley and me without hesitation. We had a holiday that we will never ever forget.

My family would have liked to have had a longer friendship with Sruti; they loved him as I did. He was a true and honorable man in every possible way. Sruti, I will miss your smile and your very wonderful friendship. You will always be in my heart. My condolences to your wife and family: you had the most beautiful person in your lives and I am fortunate to have had a small part of that.

Hare Krishna



*Sandra Parnell  
Deputy Mayor of Elstree and Borehamwood*

## Just published!

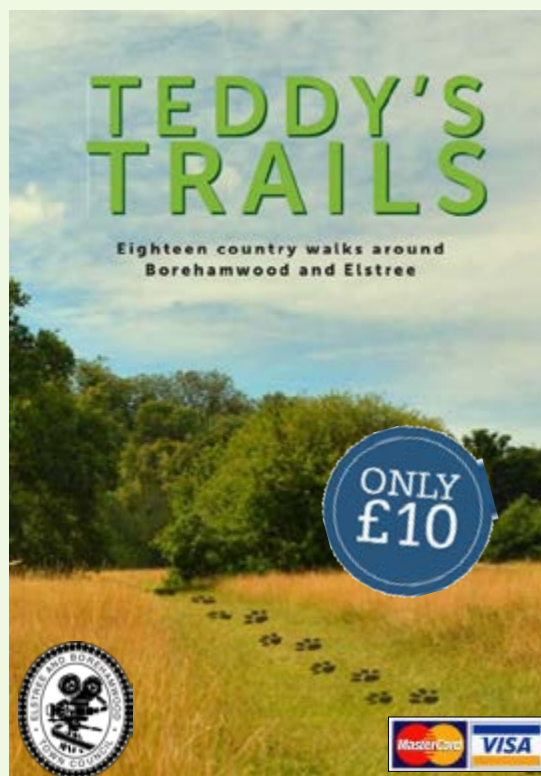
### Teddy's Trails are now available in print ...

Elstree and Borehamwood Town Council's much-acclaimed network of country walks has now been published as a book. With 266 pages, fully illustrated, and spiral bound for easy use, it is a must-have guide for everyone who loves our locality and is interested in its past.

Teddy's Trails are named after the fox terrier whose joy in exploring the countryside inspired the book. There are 18 walks, ranging in length from 3 to 8 miles, with copious notes about places of interest along the way and people associated with them.

It is priced at only £10 a copy.

Once the virus emergency is over, it can be ordered by phone from Elstree and Borehamwood Town Council on 020 8207 1382 (card payments accepted) or by post from the council at Fairway Hall, Brook Close, Borehamwood WD6 5BT (cheques payable to Elstree and Borehamwood Town Council).



## Youth Makes Music Concerts

### All Saints Church, Saturday 15 February

This was a snap concert, a partnership between Elstree and Borehamwood Town Council, Studios Rotary Club and All Saints Church to raise funds for use in promoting youth music in the Elstree and Borehamwood area.

Rena Delaney, a music teacher in the area of long standing in the area, encouraged several her pupils to perform. At the end of the concert Rena presented a cup for the most improved musician to Robert Kaye, a pianist and saxophonist.

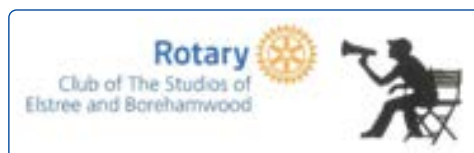
Riley Levene sang Imagine, A Million Dreams and La Vie en Rose. Benita Nwaso played her flute. Borehamwood Community Choir were our Young at Heart group, who encouraged audience participation in a 20 minutes performance.

A magnificent £435 was raised.

All performers received a certificate signed by the Town Mayor, Councillor Simon Rubner, and Studios Rotary Club president Nick Male to show our appreciation.



*Pat Strack*



### Royal Festival Hall, Tuesday 3 March

Studios Rotary Cub sponsored three acts. Heathers Ensemble, a trio from Borehamwood sang 'Burn' from Hamilton. The girls were composed and made us proud. Riley Levene sang Hallelujah. It is disconcerting to hear this favourite tune sung with such feeling by someone so young. Heathers Ensemble and Riley Levene had been winners at Borehamwood's Got Talent in previous years.

Year 6 pupils from Cowley Hill School and Kenilworth School, both in Borehamwood, were trained with students from the Purcell School, Bushey, by Abass Doodoo. Abass is a Ghanaian drum master. He had written piece specially for the Rotary Peace Drummers for this concert. Alison Cox, outreach coordinator Purcell School, did a superb job in keeping all the balls in the air and ensuring the performance was polished.

Two coaches took the drummers to the Hall, one from each school, for rehearsals on stage at 3pm. It was a wonderful experience for these young people, although daunting and almost overwhelming for some. Drummers for Peace were the finale. Three older singers from Purcell encouraged the audience to join in the Ghanaian chants, a fantastic end to an amazing evening. It was a long day for all, but a great experience performing in a prestigious venue in front of a huge audience. Studios Rotarians thoroughly enjoyed the performance, including the quips from the host Bill Turnbull.

Well done Rotary London for making this happen. Thank you to all Rotarians who worked so hard to make sure this was a success. Abass Doodoo will be back in Borehamwood organising drum and boomwhacker training. Watch this space.

*Pat Strack*



## All Saints Church Saturday 14 March

Thank you to Rotary Clubs of London for planting the seeds to run concerts to showcase young performers. Studios Rotary Club have now run three Youth Makes Music (YMM) concerts at All Saints Church, Borehamwood, as well as sponsoring three groups at the Royal Festival Hall: Riley Levene, Heathers Trio and the Rotary Peace Drummers. YMM was on 14 March at All Saints Church, Shenley Road, Borehamwood; a slot for the Young at Heart was included.

Thank you to all Studios Rotarians who helped at this fantastic concert. There was a huge range of participants from seven years old to much older. The range of instrument players was wide: piano, flute, cello, violin, flugelhorn, saxophone and trumpet. Duets and solos were played on the piano. All the boxes were ticked - age range, variety of instruments, music from different genres and cultures with performers from many ethnic groups.

Alan Duguid, musical director, St Ignatius School, Enfield, brought a number of performers playing a range of instruments and different genres of music.

Rosemary Wiseman's young musicians were entertaining and showed much confidence. Nemunis and Saule Fusioni's Masquerade duet was superb. Such young musicians were confident and accomplished. Benita Nwosu played a Celtic Collage on the flute, accompanied by Rosemary Wiseman, who had stepped up having seen the score only two minutes before the performance! Dylan played Haydn's Trumpet Concerto and Harry Dove played Concerto de Aranjuez on the flugelhorn, both accompanied by Derek Holland on the piano. A round of applause to dad, Wayne Smith, who having had only four lessons played When the Saints Go Marching In on the saxophone.

Riley sang Hallelujah, reprised from the Royal Festival Hall on 3 March. Michelle Augustin sang a new composition, accompanied by Rosemary Wiseman on the piano and flute - not both at the same time! The lyrics were by Lorraine Reed and Steve Pemberton, and the music composed by Lorraine Reed and Rosemary Wiseman. all Writers in the Wood - a new string to their bow. BOOM! It's exciting that we premiered a new composition. This will be played at other events in the future.

The concert closed with Rosemary and Laurence, with audience participation, singing 'Young at Heart.'

A huge thank you to The Revd Tim Warr, Pam and Marijke for allowing this to go ahead - the last event at All Saints for the foreseeable future.

It was so worthwhile not to postpone this. Such goodwill was generated, and music lifted the spirit. There was a coming together across race, age and culture. A recipe for success.

*Pat Strack*



 **24hr emergency**

domestic locksmiths  
auto locksmiths  
shoe repairs  
key cutting

**Emergency number**  
020 8201 1480  
020 8207 2066  
mobile: 07831 806 536  
[www.aylocksmiths.co.uk](http://www.aylocksmiths.co.uk)  
[emergency.locksmith@virgin.net](mailto:emergency.locksmith@virgin.net)  
4 Furzehill Parade, Shenley Road,  
Borehamwood, WD6 1DX

**Need a school  
runner and  
evening  
babysitter?**

**Call Janice on  
07958 368469**

**Enhanced DBS &  
RoSPA Advance Driver**

 **Nelken**  
JEWELLERS



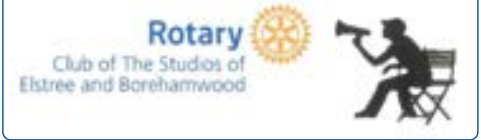
*Specialist Repairs & Renovations  
to all Diamond & Gold Jewellery  
for over 120 Years...*

83 Shenley Road Borehamwood Hertfordshire WD6 1AG  
Tel: 020 8953 2727 email: [nelken.jewellers@hotmail.co.uk](mailto:nelken.jewellers@hotmail.co.uk)





## All aboard the Book Swap scheme at the railway station



Books are flying off the shelves of the Studios Rotary Club book swap scheme at the Elstree & Borehamwood Railway station. Over the last six months, nearly three thousand books have taken a journey with commuters, promoting reading in our local community and beyond, furthering one of the ideals of Rotary. There are now three bookcases (one in the ticket hall and two in the waiting room), which are regularly replenished by dedicated local volunteers.

You will find on the Book Swap shelves a wide range of exciting books from novels to reference books, all free of charge. The lower shelf usually displays children's books to encourage early reading. All books are checked and labelled with



Rotary bookplates. Please visit our railway station, help yourselves to a book for your enjoyment and promote this successful and benevolent scheme!

This initiative relies on the kind donations of books by the public at our four book collection points - in the station, 96 Shenley Road, Morrisons supermarket and Fairway Hall.

Once again, the Studio Rotary Club of Elstree and Borehamwood would like to thank all our sponsors for their generous support.

## Baba Marta Day

All Rotary Clubs have special speakers and many come from other parts of the world. A chance meeting of a Rotarian, Geoff Strack, at the Garden Crafts Society, and his receiving a red and white yarn bracelet as a gift to commemorate a special day for Bulgarian,s meant that Studios Rotary Club heard about Lina Christova. We were pleased to welcome Kati, her daughter, too. Lina lives in Borehamwood and is a committee member at the Garden Crafts Society.

Lina was invited to speak to Studios Rotarians about the significance of 1 March which is celebrated by Bulgarians around the world. On that day they wear red and white threads intertwined into different items – brooches, bracelets, necklaces, called martenitsa. Red signifies the sunrise and sunset and white signifies purity and the snow. Lina explained how even during the Communist era this festival was still celebrated widely. Martenitsas are given as a gift symbolising a wish for health and happiness. They are worn that day and throughout the spring or until the stork or swallow is spotted. It is common to see trees festooned with the discarded bracelets.

Over time many embellishments such as tassels or figures have been added. Lina showed a variety of these. She donated a few for the club archives. Every Rotarian received a bracelet. Originally a pagan festival, it is now one of the oldest Christian festivals in Europe.





# Leecliffe Big Local Covid-19 and summer events

As an organisation with our residents always at its heart, we had planned for and were ready to put on more of our always-popular and free-to-attend events for families, children and young people.

In the current climate of Covid-19 it can seem that the whole world has either stopped or has paused, and that the light at the end of the tunnel can seem a long way away.

Owing to government restrictions on social gatherings, we had to cancel the events for families and children due to take place this Easter. Leecliffe Big Local are still planning ahead in the hope of putting on as many of our events as possible this summer!

We hope this summer's planned actioned packed events will be familiar; such as our ever-popular football targets, circus skills and creative clubs, wildplay activities, den building, orienteering and scavenger hunting, plus good old-fashioned 'camp fire' storytelling. All in safe and inclusive local green spaces!

For those in your family who prefer their fun on two wheels, Leecliffe Big Local will also hopefully be able to provide BMX biking taster sessions for both novice and experienced riders.



Leecliffe Big Local will also be teaming with brand-new partners to help your child's inner sportsman or woman shine through in games of basketball, tennis, football, street dance, badminton smash up, street golf, pop up tennis, cricket, rounders and much more.

Look out for updates on our Facebook page 'Leecliffe Big Local' or website [www.leecliffe.org](http://www.leecliffe.org) – these are strange times, but we will do the best we can for you.

To advertise in the Town Crier please contact Dan Salter on 020 8207 1382 or email at [dsalter@elstreeborehamwood-tc.gov.uk](mailto:dsalter@elstreeborehamwood-tc.gov.uk)



**Foot Health by Jessica**  
 Jessica Jenkins MAFHP MCFHP  
 Foot Health Practitioner  
 Graduate of the SMAE Institute



MEMBER OF THE SMAE INSTITUTE

**Foot Care in the comfort of your home**

- Regular foot care /Nail cutting
- Corns, Hard skin and calluses
- Thickened and Fungal nails
- Dry and Cracked Heels
- Verrucas and Involutd nails
- Foot care advice

*Hello!.. I am a foot health Practitioner (FHP) with a mobile foot clinic, visiting patients in their own homes. I am fully insured and DBS checked.*



**Please Call 07854037127**

[foothalthbyjessica@gmail.com](mailto:foothalthbyjessica@gmail.com)

A member of the British association of the Foot Health Professionals (MAFHP) & member of the college of foot health professionals (MCFHP)

# Woodcock Hill Village Green

Sites adjacent to and close to Woodcock Hill that were put forward by developers for the Hertsmere Local Plan have caused much concern for the WHVG Committee. Hertsmere has 80% of its land in the green belt, so some green belt will inevitably be built on to fulfil government guidelines for building homes and employment facilities.

Almost all the land between Furzehill Road and Deacons Hill Road is not only green belt but also has wildlife conservation status. The historic enclosure-era hedgerows around the Horses' Field are registered with Herts Bio records, as are the historic dewponds. The dewponds were used in ancient times for livestock to drink and refresh before going on to Barnet market.



## Proposed sites

Land north of Barnet Lane (HEL209a) 320 homes, (HEL 107a) 55 homes, (HEL197b) 50 homes, (209b) 70 homes: a total of 495 homes between Furzehill Road and Deacons Hill Road. In addition Taylor Wimpey has proposed building 105 homes on the village green itself.

Already 240 homes have just been built on the Taylor Wimpey site between the railway line and Byron Avenue/Fire Research estate.

The sites proposed are all unsuitable, as the extra amount of traffic generated would exacerbate the present dire traffic movements in the area. The infrastructure will not support these developments.

The WHVG committee submitted objections to all these sites.

## Working parties

Alex Melson continues to plan and organise these monthly events. In November a very successful working party was held incorporating Mitzvah Day and planting Rotary Trees for Peace. Oliver Dowden MP and his children, with members of the local Jewish community and Studios Rotary and other Rotarians, worked with committee members to plant 300 trees, and to clear litter and brambles. Another 200 trees were planted by the March working party.



## Bits and pieces

As there has been such a wet winter the ponds filled up and marginal growth and pondlife have flourished.

A notice board was erected near the Vale Avenue entrance. Updates on sightings and information will be posted there.

An oak was given to each MP by Extinction Rebellion. Oliver Dowden planted the Hertsmere tree on Woodcock Hill, aided by Nick Male, President of Studios Rotary. EBTC staff dug the hole.

Tesco tokens were suspended due to Covid-19 virus concerns. WHVG as one of the contenders received a £1160 donation.

A brown sign, directing people to WHVG, has been ordered (and paid for) from Hertfordshire county council. It will be erected between Furzehill Road and Carrington Avenue.

The Rotary Purple4polio crocuses planted by local schoolchildren have shown their heads amongst the trees planted.

## Allum Lane Fields Association (ALFA)

### Against loss of green belt land off Allum Lane

In late 2018 Jeannie H, Marcia F and Helen S set up Allum Lane Fields Association (ALFA) to ensure local residents were aware of the green belt land put forward as potential sites for housing, to share our concerns, and respond to the December 2018 consultation. With more potential sites on green belt land being introduced in 2019, we have continued to communicate information and the means of responding.

The sites are:

- BE1 with plans for a housing estate comprising 250 houses and a nursing home <http://www.landsouthofallumlane.co.uk/>
- HEL506 with an additional 50 homes adjacent to the BE1 site
- HEL514 with 830 homes on the Radlett Park Golf Club that borders Parkfields and The Spinney

Potentially 88.5 hectares of high value green belt land is at risk of being irreversibly lost in Elstree and Borehamwood. This green belt land is vital to our community to protect against urban sprawl and the coalescence of settlements with Elstree village. It also provides multiple eco-system benefits including improved air quality, flood protection and carbon absorption, and a home, feeding ground, nesting areas and safe spaces for our local wildlife. We will do all we can retain these green fields and footpaths – and to avoid them being replaced forever with yet more houses, tarmac and cars.

**To join ALFA free of charge please email your name and address to [alfa2018group@gmail.com](mailto:alfa2018group@gmail.com).**

## Sky studios complex

**20/0315/FUL - Development of film/production studios (use class B1b) and ancillary floorspace, new access arrangements, car parking, landscaping, infrastructure and associated works**

The proposed Sky Studio complex on land east of Rowley Lane, Borehamwood is potentially the most exciting and significant development in our town since the Elstree Studios were saved in 1996.



Although it is to be built on a site that includes some green belt land, it is not what would be regarded as quality green belt, apparently having no particularly valuable fauna or flora, and which does not form a break between settlements. In fact, permission has previously been granted for this site to be built on, albeit for sports related purposes, which are generally permitted on green belt.

Support for this development is based on the expectation that it would promote the local film and TV industry, for which Borehamwood can be considered to be the “British Hollywood”, would create many employment opportunities, would contribute significantly to a thriving local economy, and would consolidate the area as a hub for film and television related production and expertise.



An artist's impression of the proposed Sky Studios Elstree development



## Wild garlic for wild times

Next time you are out for your permitted daily exercise walk, and you are going through a wood, keep an eye out (and your nose might help) for wild garlic.

If you pick only a couple of handfuls of young leaves from different plants (leaving the main plant to regrow new leaves), you can take these home, give them a good rinse, and follow this recipe to make delicious pesto to swirl onto your stash of dried pasta, assuming you find yourself getting bored of the tomato sauce you also stashed!



### Wild Garlic Pesto

- 100g wild garlic leaves (or combo of wild garlic and young nettle)
- 50g parmesan
- 50g of pine nuts or toasted hazelnuts
- 1 clove of garlic (optional)
- Olive oil
- Lemon juice
- Salt and pepper

1. Blitz the first four ingredients in a blender, until a paste, slowly add olive oil until you get the consistency you like, then add lemon juice salt and pepper to taste.

2. Keep in a clean jar in the fridge, and pour a little extra oil on top to keep from drying out.

Will keep for two weeks. Presto!

**Allotments are still open for business, just keep your distance and make sure you wear gloves at the gate. If you are unable to go out, it's good to dream, try not to worry, and take care.**

Anne Nicodemus

## Borehamwood and District Garden Craft Society

Borehamwood and District Garden Craft Society is in its 73rd year of existence and with pride we look forward to another happy gardening year.

In spite of varying weather patterns, members regularly pay their £5 annual subscription and receive a copy of the society's yearbook revealing what each of the three shows' classes will be. The book gives guidance on what plants to prepare for the seasons of 2020 and will grow well enough to compete with other gardeners at the spring, summer and autumn shows.

Sadly, due to the coronavirus pandemic, our spring show and the group visit to the RHS spring launch have had to be cancelled. However, if news improves, the society's programme will continue with the summer show on 21 June and autumn show on 26 September.

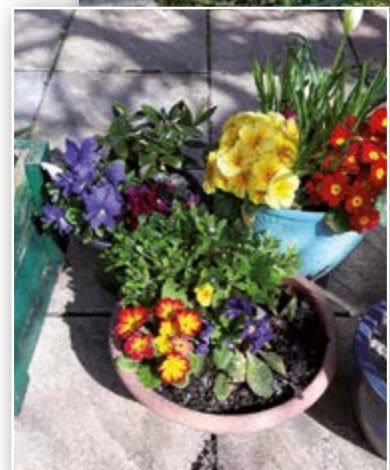
The committee, elected at the AGM held in early February, organises a number of trips and workshops for the society's members to maintain contact with each other and the community. We take part in many of the town's events, fund-raising for our society and others.

With the new restrictions in force, we are making the most of staying at home to spend more time in the garden, and plant new varieties of flowers and vegetables. We exchange seeds left over from our planting as well as divide and share any plants that need thinning.

Events planned for the near future like the VE Day celebration and pre-festival activities in the piazza are suspended for the time being. We look forward to the good news of their resumption in the near future. Please all, stay safe and be aware of the dangers of inadvertently spreading this deadly virus. Join in the garden resolution.

**For enquiries please write to [linachristova@gmail.com](mailto:linachristova@gmail.com) or call Rose Barry 07960 530420.**

Rose Barry



# Goods for Good Mobilises Town Mayor and Volunteers to Aid NHS Frontline Workers

Today town mayor of Elstree and Borehamwood, councillor Simon Rubner, joined Goods For Good's team of volunteers. He delivered toiletries and hand creams, urgently requested by Mount Vernon Hospital in Uxbridge. He loaded his own car and delivered the goods.

Lindsey Waddell, organisational development consultant at the Hillingdon Hospital NHS Foundation Trust, told Rosalind Bluestone "The main items staff find very useful are toiletries, in particular items such as hand creams, shower gels, body lotion, deodorant, toothpaste, shampoo (we have on site showers)". The mayor will continue his work with the charity throughout the crisis.

Goods for Good, the small British charity which has delivered more than £20-million worth of essential goods to people in need around the world, has now shifted its focus to meet the needs of frontline workers fighting Covid-19 here in the UK.

"There are thousands of families right here in the UK that the pandemic is affecting due to shortages of essential goods, job losses, time off work and illness. We will mobilise our local connections and partners to reach these people who will be struggling to cope," said Rosalind, who founded Goods for Good in 2014 at her dining room table in Borehamwood and then registered with the Charities Commission in 2016.

"As experts in the delivery of SOS humanitarian aid, we have adapted our core model at this time of crisis," said Bluestone. "We are sourcing goods from our industry partners, and our amazing volunteers are helping our team of two make this happen."

Among those in need Goods for Goods is undertaking to support are:

- **NHS front line workers at local hospitals** - delivering nappies and wet wipes, soap, shower gel, feminine hygiene products, toiletries and food items. Many of these goods are scarce in the supermarkets and often inaccessible to front line workers, or they are just too exhausted to go shopping.
- **Trussell Trust foodbanks** - delivering, nappies and wet wipes, soap, shower gel, feminine hygiene products, toiletries and food items. Goods are being supplied both by industry partners and by the community.
- **Refugee and asylum seekers** - Doorstep parcel drops of essentials to individual families in Barnet and surrounding areas. Goods include nappies, toiletries, toilet paper and feminine hygiene goods.
- **The homeless** - Distributing brand new sleeping bags to those who are particularly vulnerable at this time.
- **National food programme** - We are launching a programme to mobilise families to volunteer and donate goods from their larders to their own local foodbanks.



The charity has set up a crowd-fundraising platform in order to raise vital funding <https://www.crowdfunder.co.uk/covid-19-response-food-hygiene-sanitary-items>

**If you're a company with overstock in essential goods or an individual who wants to volunteer, please contact:**

**GOODS FOR GOOD**

Registered Charity No: 1165565

Tel: 01582 540 521

[info@goodsforgood.org.uk](mailto:info@goodsforgood.org.uk)

## Borehamwood Foodbank

### BES (bring your own) supper quiz night raises over £900 for Borehamwood Foodbank

Borehamwood and Elstree United Synagogue has used the lockdown as an opportunity to raise money for the Borehamwood Foodbank.

During the lockdown, the synagogue leadership has organised a wide range of religious, educational and social online events. Having heard about a shortage of supplies for the local foodbank, it was decided that a quiz was the perfect medium to raise money and support it. Due to the lockdown, community members were happy to sign up and participate, with many making the session a family event and gathering around the kitchen table to join in.

The quiz consisted of ten rounds on varying topics, with two picture rounds via a screen share replicating the breakout rounds one might expect at a traditional supper quiz. Some answers were hotly debated, with a minority of competitors taking it more seriously than others.

"The aim of the evening was to have a bit of fun and raise some money. We certainly didn't expect to get over £900, but we hope that this will help support people in need at this difficult time" said Leo Brownstein, quizmaster for the evening. "We let people mark their own answers as there was no prize; we had hoped to give away a pack of toilet roll, but unfortunately it was in short supply".

If you are able to visit the Tesco supermarket, please make sure to put something in the foodbank cage. All support is gratefully received.



### Coronavirus update

As the coronavirus pandemic unfolds in the UK, our main priority is ensuring the safety of everyone who comes to our foodbank – whether it's someone needing help, someone volunteering their time, or someone making a donation.

Things are changing quickly, so we will update our website (<https://borehamwood.foodbank.org.uk/>) regularly with information about what's happening at Borehamwood Foodbank and how people can access support and help us be there for people in crisis.

We're still supporting people with emergency food at Borehamwood Foodbank and will do so for as long as is possible. In the meantime we need you, our local community, to continue donating vital food supplies. While we haven't run out of all donations, there are certain items we're running low on. Your support is vital at this time, so if you're considering donating, we're particularly in need of:

- Cereal
- Tinned meat (pies, hot dogs, meatballs)
- UHT milk and fruit juice
- Tinned custard
- Tinned fruit

You can find out more about the Trussell Trust network's response to coronavirus here [[link: www.trusselltrust.org/coronavirus-food-banks](http://www.trusselltrust.org/coronavirus-food-banks)] and you can follow us on Facebook to stay up to date.

## Rotary Club of Elstree & Borehamwood

Although the club has stopped meeting at our regular venue, the Waggon and Horses in Elstree, we are now meeting online to carry out club business and enjoy some fellowship.

This meant that we were able to agree to provide support in these difficult times for the Lord Lieutenant's Covid-19 appeal for Hertfordshire Hospices (£300), Kids Out (£200) and our Lunch monies were used to make a further donation of £360 to the Borehamwood Foodbank.

We will continue to hold weekly meetings online and we still welcome visitors and new members.

**If Rotary is of interest to you please call the president, Clive Butchins on 07939 088421 or secretary, Cynthia Barker, on 07956 222422.**





## High Sheriff Awards Celebrates Camp Unity

Sarah Beazley, former High Sheriff of Hertfordshire, publicly recognised and rewarded 14 Hertfordshire voluntary organisations at the 2020 High Sheriff Awards ceremony held on 12 March 2020. Among them was Camp Unity, the multi-cultural, interfaith camp set-up in Hertsmere.

The annual Awards, now in their 25th year, celebrates the excellent work undertaken by charitable groups and individuals who have made a significant contribution to Hertfordshire's communities.

Sarah Beazley said "During my year as High Sheriff I have come across many wonderful charities and voluntary groups who do so much to make their communities stronger. It is important to share their successes so they can motivate and inspire ... Interfaith work can sometimes mean dialogue between leaders without much grass roots engagement and I think it [Camp Unity] is a great example of that practical engagement - doing something fun and cooperative that really brings those of different faiths and backgrounds in a community together, and allows for gentle exploration and appreciation of difference."



Father Dominick McKenna teaching children a camp song (Aug 2019)

Camp Unity was created in 2019 to provide a multi-faith overnight residential camping experience for children in the Elstree/ Borehamwood area – to allow our diverse communities to meet and make lasting friendships.

Rivka David, director of Camp Unity, said: 'We were delighted to receive this County-wide recognition for our 2019 summer camp initiative. This is a tribute to the dedicated efforts of all our wonderful trustees, and a huge vote of confidence to staff, campers, parents and sponsors who believed in our project. We are hoping to run Camp Unity 2020 from 16-21 August this summer. For more information contact [campunityborehamwood@gmail.com](mailto:campunityborehamwood@gmail.com)."

Camp Unity Trustees include; Kashif Merchant, Rumbi Hitchcock, Cllr Victor Eni, Father Dominic McKenna, Jirina Horenik, Rivka David and Rabbi Berger. Awardees also received a financial award from the High Sheriff's Fund, managed by Hertfordshire Community Foundation.



Hertfordshire Fire & Rescue Demonstration to Camp Unity (Aug 2019)

## Diversity 2020

Elstree & Borehamwood Unity Network are delighted to bring you the opportunity to sponsor the premier multi- cultural event of South Herts.

This year's Elstree and Borehamwood Diversity Festival will be our third annual convention. We have a proven track record of bringing our various national communities together using fashion, art, music and cuisine in progressive fusion. Leading academics and civic leaders have taken part in top- level networking breakouts. Hands - on music sessions have enabled the involvement of all age groups in harmonious co-operation.

Many organisations have formed dynamic information hubs and have found these invaluable in letting the people hear their voice. Now we offer you the chance to be part of this great project.

Please get in touch without delay and we will work with you on a package to facilitate your part in this vital movement promoting Diversity in our region on the week end of the 31 October and 1 November 2020 Fairway Hall Borehamwood Email: [interculturalbe@gmail.com](mailto:interculturalbe@gmail.com)

UNTY IN DIVERSITY

*Martine H Eni*



## Corona Care Challenge



# The Corona Care Challenge

## Who we are?

The Landesberg family from North London. We are an incredibly close and tight-knit family and have always been heavily involved in charity work. As soon as this crisis hit, there was no question that we collectively wanted to focus our efforts in supporting the nation in any way that we could. Our grandfather was extremely vulnerable in the past few years, so it really allowed us to see how many people are truly in need across the country at this time. He was the Patriarch of our family and taught us all the importance of having good values and morals in life. He taught us to be proactive and helpful to anyone in need, and so especially at this crazy time we naturally felt this was the best way to honour his memory. We started by setting up a Go-Fund me Page to raise funds so that we could start by organising essential care packages to help the most vulnerable during the Covid-19 Crisis. This has expanded considerably over the past few weeks since our initial set up on March 16th 2020.

We are helping anyone from the immune suppressed, the elderly, single parents, those living with disabilities, and those who are deemed as high risk. We are continuing to support all the incredible frontline staff at the NHS across London and Greater London. We've provided them with daily fresh cooked meals (mainly from one of our family restaurants, AOK Kitchen), as well as, supplying drinks and snacks to get them through long gruelling shifts and we have also created what we are calling 'Heroes Markets' at many hospitals within London and Hertfordshire. This means staff don't need to worry about going into a supermarket to get the basic essentials. A luxury we take for granted. We have been working with some big brands to get hydrating hand creams, face creams and lip care to the NHS staff to aid skin damage due to the continuous wearing of PPE. Often in severe conditions on Covid wards, the staff are badly dehydrated for several hours, as the visors, goggles, masks etc are so tight and so hot, they can't

decontaminate for a quick sip of water. The conditions in which they are working are really quite extreme.

We are currently helping over 18 hospitals and counting, including The Royal Free, UCLH, Chelsea & Westminster, Barnet General, St Thomas, North Middlesex, Royal London, Harefield and The Royal Brompton, to name but a few! We have also extended our efforts to support the incredible team at The London Ambulance service, looking after over a dozen Ambulance depots across the capital. We provide them with meals, snacks and beverages to make sure they are well fed during their shifts, as up until two weeks ago they were not able to eat properly at all, and were often working around the clock.

## So How Can you Help?

At present we have raised over £125,000.00 and we want to continue our efforts until we have won the fight against Covid-19.

We have expanded our initiatives and we are now also focusing efforts on funding hospitals with essential life saving equipment.

There are many items of vital importance stretching from caring for those in need, as well as in hospitals, particularly on the ICU wards.

Please see below what your donations can help us fund so urgently.

- **Care packages** - Any individual person or family who are either vulnerable, high risk, living with disabilities or in any other extreme circumstances will receive a very well stocked care package consisting of basic household essentials.

**10 Care bags will cost on average £120.**

- **Meals for the NHS staff** - We have been providing, and continue to provide daily, hot and cold meals to the front line NHS staff. We are working with over 18 different hospitals in London & Greater London.





**100 Meals will cost on average £225.**

- **Heroes Markets** - We have now supplied over a dozen hospitals with what we are calling "A Heroes Market". This essentially is an in-house supermarket, free of charge, for NHS doctors and nurses to be able to do essential shopping after a shift.

**One Heroes Market will cost on average £700.**

- **iPads** - These simple items of technology are being used (tragically) for end of life patients, so that they are able to communicate with their families and loved ones and so they don't have to feel alone.

**iPad cost will £400 each**

- **Syringe pumps** - These vital pumps administer fluids to patients. These syringes are used to keep patients asleep, regulate their blood pressure and also to administer pain relief. ICU wards need these in plentiful amounts.

**Syringe pump will cost £1,051 each.**

- **Workstations on wheels** - These are so important for doctors to be able to move freely and efficiently from bay to bay – from patient to patient, with full access to their computers.

**Workstation will cost £3,100 each**

- **Hand held echo probes** - These are portable ultra sound machines can diagnose a patient straight away and also allow for the right medicine to be administered.

**Echo probe will cost £4,920 each.**

- **Extra Coporeal Membrane Oxygenation (ECMO) Cardio Help Unit.** This incredible machine really is a patient's last chance at survival. This could save four out of five patients who would have otherwise died without this support. This machine can give a patient a full chance at recovery with limited or no aftercare needed.

**ECMO machine will cost - £66,000 each.**

All of the funds raised will go immediately to supporting the NHS hospitals, alongside supporting those in need.

This deadly virus knows no class, race, or religion. Everyone needs to work together in the fight against Covid-19

**To donate and support the Corona Care Challenge, visit**  
<https://uk.gofundme.com/f/corona-care-challenge>,  
<https://www.facebook.com/groups/228190898323858>  
 or email [coronacarechallenge@gmail.com](mailto:coronacarechallenge@gmail.com)



VIRTUAL  
SUMMER'S DAY  
CONCERT 2020

SATURDAY 20<sup>TH</sup> JUNE  
2020

FEATURING ARTISTS ACROSS THE  
LOCAL COMMUNITY

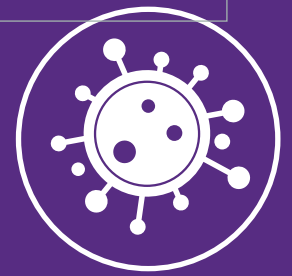
2PM

YOU TUBE

[WWW.YOUTUBE.COM/WATCH?V=UJPGWJOB\\_WVQ](http://WWW.YOUTUBE.COM/WATCH?V=UJPGWJOB_WVQ)



# Coronavirus outbreak FAQs: what you can and can't do



Updated 11 May 2020

Please check [www.gov.uk](http://www.gov.uk) for updates

## 1. Public spaces / outdoor activities / exercise

### 1.1 What can I do from Wednesday 13 May that I couldn't do before?

There will be a limited number of things you can do on Wednesday that you cannot do now:

- spend time outdoors - for example sitting and enjoying the fresh air, picnicking, or sunbathing;
- meet one other person from a different household outdoors - following social distancing guidelines;
- exercise outdoors as often as you wish - following social distancing guidelines;
- use outdoor sports courts or facilities, such as a tennis or basketball court, or golf course - with members of your household, or one other person while staying two metres apart;
- go to a garden centre.

At all times, you should continue to observe social distancing guidelines when you are outside your home, including ensuring you are two metres away from anyone outside your household. As with before, you cannot:

- visit friends and family in their homes;
- exercise in an indoor sports court, gym or leisure centre, or go swimming in a public pool;
- use an outdoor gym or playground;
- visit a private or ticketed attraction;
- gather in a group of more than two (excluding members of your own household), except for a few specific exceptions set out in law (for work, funerals, house moves, supporting the vulnerable, in emergencies and to fulfil legal obligations).

If you are showing coronavirus symptoms, or if you or any of your household are self-isolating, you should stay at home - this is critical to staying safe and saving lives.

### 1.2 I don't have to stay at home anymore?

You should stay at home as much as possible. The reasons you may leave home include:

- for work, where you cannot work from home;
- going to shops that are permitted to be open - to get things like food and medicine
- to exercise or spend time outdoors;
- any medical need, including to donate blood, avoid injury or illness, escape risk of harm, or to provide care or to help a vulnerable person.

These reasons are exceptions and a fuller list is set out in the regulations. Even when doing these activities, you should be minimising time spent away from the home and ensuring that you are two metres apart from anyone outside of your household.

### 1.3 Are you reopening tennis courts / golf courses / basketball courts etc

Yes. Sports courts can re-open, but you should only partake in such

activities alone, with members of your household, or with one other person from outside your household, while practising social distancing. You should take particular care if you need to use any indoor facilities next to these outdoor courts, such as toilets.

You should not use these facilities if you are showing coronavirus symptoms, or if you or any of your household are self-isolating.

### 1.4 Can I meet my friends and family in the park?

You can meet one other person from outside your household if you are outdoors. Public gatherings of more than two people from different households are prohibited in law. There are no limits on gatherings in the park with members of your household.

### 1.5 On what date can I expand my household group?

The government has asked the Scientific Advisory Group for Emergencies (SAGE) to advise on the concept of "bubbles", which would mean allowing people to expand their household group to include one other household. For the time being, you cannot visit friends or family, except to spend time outdoors with up to one person from a different household.

### 1.6 Can I go out to help a vulnerable person?

You can go out to care for or help a vulnerable person, or to provide other voluntary or charitable services, following the advice set out here. You should not do so if you have coronavirus symptoms, however mild.

Wherever possible, you should stay at least two metres away from others, and wash your hands for at least 20 seconds (or use hand sanitiser if soap and water are not available).

### 1.7 Are there restrictions on how far I can travel for my exercise or outdoor activity?

No. You can travel to outdoor open space irrespective of distance. You shouldn't travel with someone from outside your household unless you can practise social distancing - for example by cycling. Leaving your home - the place you live - to stay at another home is not allowed.



### 1.8 Can I share a private vehicle with someone from another household?

No. You can only travel in a private vehicle alone, or with members of your household.

### 1.9 Are day trips and holidays ok? Can people stay in second homes?

Day trips to outdoor open space, in a private vehicle, are permitted. You should practise social distancing from other people outside your household.

Leaving your home - the place you live - to stay at another home for a holiday or other purpose is not allowed. This includes visiting second homes.

Premises such as hotels and bed and breakfasts will remain closed, except where providing accommodation for specific reasons set out in law, such as for critical workers where required for a reason relating to their work.

### 1.10 Can students return to their family home if they've been in halls all this time?

In general, leaving your home - the place you live - to stay at another home is not allowed.

If a student is moving permanently to live back at their family home, this is permitted.

### 1.11 Is there a limit on the number of people attending funerals?

There is no change to the guidance on attending funerals at present.

### 1.12 Can weddings go ahead?

There's no change at this time, but we have set out our intention to enable small wedding ceremonies from 1 June. We understand the frustration couples planning a wedding must be feeling at this time. As with all the necessary coronavirus restrictions on register offices, places of worship and other venues, we will look to ease them as soon as it is safe to do so. We will work closely with faith leaders and local government over the coming weeks to go through the practicalities.

## 2. Vulnerable groups, shielding, 70 year olds and over, and care homes

### 2.1 Does easing restrictions apply to healthy 70 year olds and over?

The advice for those aged 70 and over continues to be that they should take particular care to minimise contact with others outside their household.

If they do go out more frequently, they should be careful to maintain distance from others. They and everyone should continue to comply with any general social distancing restrictions.

We know that those aged 70 and over can be absolutely fit and healthy and it's not the case that everybody over 70 has a chronic health condition or an underlying disease.

But unfortunately, we also know that as you get older, there is a higher risk of coronavirus having a more serious impact with infection. Complications and deaths are more common in the elderly, even those without pre-existing conditions.

Anyone who has been advised to shield by the NHS or their GP, including those 70 and over, should continue to do this until at least the end of June.

### 2.2 How long will shielding be in place?

We've advised individuals with very specific medical conditions to shield until the end of June and to do everything they can to stay at home. This is because we believe they are likely to be at the greatest risk of serious complications from coronavirus.

We know this is challenging guidance to follow, which is why we have a support scheme in place to provide help with access to food and basic supplies, care, medicines and social support.

We are keeping the guidance to shielded people under review.

### 2.3 What safety standards will need to be put in place in care homes?

We have issued detailed guidance about infection control and staff safety in care homes to help admit and care for residents safely and protect care home staff.

This includes isolation procedures, PPE and infection control training for all staff, cleaning and how to provide personal care safely.

As with all of our advice, this guidance is kept under constant review and updated frequently, in line with the latest scientific evidence.

## 3. Going to work / Safer spaces

### 3.1 Who is allowed to go to work?

In the first instance, employers should make every effort to support working from home, including by providing suitable IT and equipment as they have been already. This will apply to many different types of businesses, particularly those who typically would have worked in offices or online.

Where work can only be done in the workplace, we have set out tailored guidelines for employers to help protect their workforce and customers from coronavirus while still continuing to trade or getting their business back up and running. We will be publishing even more detailed COVID-19 secure guidelines in the coming days, which has been developed in consultation with businesses and trades unions.

These 'back to work' guidelines apply to those in essential retail like:

- supermarkets;
- those in construction and manufacturing;
- those working in labs and research facilities;
- those administering takeaways and deliveries at restaurants and cafes;
- tradesmen, cleaners and others who work in people's homes;
- those who are facilitating trade or transport goods;
- and so on.

Non-essential retail, restaurants, pubs, bars, gyms and leisure centres will remain closed. They will reopen in a phased manner provided it is safe to do so.

There are specific guidelines for those who are vulnerable, shielding, or showing symptoms.

### 3.2 What is a critical worker?

Critical workers are those working in health and care and other essential services, who can still take their children to school or childcare and can use hotels and other accommodation services for work related purposes - for example if they can't get home after a shift or need to isolate from their families. This critical worker definition does not affect whether or not you can travel to work - if you are not a critical worker, you may still travel to work provided if you cannot reasonably work from home.



### 3.3 What is meant by the phased approach?

Not all forms of work will return to normal at once. People will have to prepare for a new type of normal. We need to make sure that any changes we do make are carefully monitored and that we aren't doing anything to increase the risk of infection and push the Reproductive value (R0) above 1. R0 describes how many people on average will be infected for every one person who has COVID-19.

We will ensure that businesses have time to prepare their premises to operate as safely as possible.

We will set out more detail about the phasing in due course.

### 3.4 Will you open pubs / cinemas / hairdressers in July?

The roadmap sets out that some businesses (like pubs, cinemas or hairdressers) will not open until Step 3 is reached.

The government's current planning assumption is that this step will be no earlier than 4 July and subject to further detailed scientific advice, provided closer to the time, on how far we can go. When they do reopen, they should also meet the COVID-19 secure guidelines.

### 3.5 What are the 'Covid-Secure' safety guidelines workplaces have to be put in place?

We have set out clear, practical steps that businesses should take to ensure their workplaces are safe and give their staff the confidence to return back to work. We will be publishing even more detailed COVID-19 secure guidelines.

These include how to keep as many people as possible safely apart from those they do not live with in various workplace settings.

### 3.6 Do people need to wear face coverings at work?

Face coverings are not compulsory. However, if you can, people are advised to wear face coverings in enclosed public spaces where social distancing is not possible or where you are more likely to come into contact with people you do not normally meet. For example, on public transport or in some shops. Face coverings can help us protect each other and reduce the spread of the disease if you are suffering from coronavirus, but not showing symptoms.

A face covering is not the same as the surgical masks or respirators used as part of personal protective equipment by healthcare and other workers; these should continue to be reserved for those who need them to protect against risks in their workplace such as health and care workers and those in industrial settings like those exposed to dust hazards.

### 3.7 Will a face covering stop me getting COVID-19?

The evidence suggests that face coverings can help us protect each other and reduce the spread of the disease if you are suffering from coronavirus, but not showing symptoms.

To protect yourself, you should continue to follow social distancing measures and isolation guidance and wash your hands regularly.

## 4. Workers' rights

### 4.1 My employer is asking me to come to work but I'm scared.

Employers and staff should discuss and agree working arrangements.

Employers should make all efforts to help people to work from home where they can. But where work cannot be done at home, employers should take clear, practical steps to help protect workers and create safe places to work, such as shift working or staggering processes. To identify the precautions needed to manage risk, your employer should discuss



the workplace risk assessment with you to identify the practical ways of managing those risks.

If you remain concerned that your employer is not taking all practical steps to promote social distancing then you can report this to your local authority or the Health and Safety Executive who can take a range of action, including where appropriate requiring your employer to take additional steps.

We are publishing further specific "COVID-19 Secure" guidelines on how to make workplaces safe, which have been developed in consultation with over 200 business leaders and trades union organisations.

### 4.2 What if they try to fire me because I won't go to work but cannot work at home?

We urge employers to take socially responsible decisions and listen to the concerns of their staff. Employers and employees should come to a pragmatic agreement about their working arrangements.

If individuals need advice, they should approach ACAS where they can get impartial advice about work disputes.

## 5. Public Transport

### 5.1 Who is allowed to travel on public transport?

If you cannot work from home and have to travel to work, or if you must make an essential journey, you should cycle or walk wherever possible. Before you travel on public transport, consider if your journey is necessary and if you can, stay local. Try to reduce your travel. This will help keep the transport network running and allows people who need to make essential journeys to travel.

We'll be setting out further guidance for passengers with more advice on how to stay safe during your journeys later this week.

### 5.2 Should people wear face coverings on public transport?

If you can, wear a face covering in an enclosed space where social distancing isn't possible and where you will come into contact with people you do not normally meet. This is most relevant for short periods indoors in crowded areas, for example on public transport or in some shops. The evidence suggests that face coverings can help us protect each other and reduce the spread of the disease if you are suffering from coronavirus, but not showing symptoms.

If people choose to wear them, we are asking people to make their own face coverings at home, using scarves or other textile items. We are publishing guidance to help illustrate the process.

We urge the public not to purchase medical or surgical masks as these should be reserved for health and social care workers.

### 5.3 Can I use public transport to get to green spaces?

You should avoid using public transport wherever possible.

## 6. Schools and Childcare

### 6.1 Can children go back to early years settings, schools or university?

We initially urge those who are currently eligible to use school provision (children of critical workers and vulnerable children) to attend. As soon as it is safe to do so we will bring more year groups back to school in a phased way when it is safe to have larger numbers of children within schools, but not before. Keeping children and staff safe is our utmost priority.

Schools should prepare to begin opening for more children from 1 June. The government expects children to be able to return to early years settings, and for Reception, Year 1 and Year 6 to be back in school in smaller class sizes from this point.

Secondary schools and further education colleges should also prepare to begin some face to face contact with Year 10 and 12 pupils who have key exams next year, in support of their continued remote, home learning.

The government's ambition is for all primary school children to return to school before the summer for a month if feasible.

### 6.2 How will you make sure it is safe?

Schools can now operate if they are organised in a way that is compatible with minimising the spread of the virus. The next phase of measures will require the development of new safety standards to set out how physical spaces, including schools, can be adapted to operate safely.

We will publish guidance advising schools on reopening to ensure schools can adequately prepare for the next phase. One of the main protective measures we can take to reduce transmission is to have small consistent group and class sizes.

### 6.3 Will children be compelled to wear face coverings at school?

No this will not be required. We will publish further advice on protective measures in schools in the coming weeks.

## 7. Borders / international visitors

Please note - these measures will NOT come into force on Wednesday 13 May. We will set out further detail, including from when these will be in force, in due course.

### 7.1 Are you isolating people at the border now?

The scientific advice shows that when domestic transmission is high,

cases from abroad represent a small amount of the overall total and make no significant difference to the epidemic. Now that domestic transmission within the UK is coming under control, and other countries begin to lift lockdown measures, it is the right time to prepare new measures at the border.

### 7.2 What is self-isolation and which countries will it apply to?

We will be asking people travelling to the UK to make some sacrifices to stop coronavirus cases from being imported. In the same way as people in the UK have made large sacrifices to control the spread of coronavirus.

So what we will be asking people to do on entering the UK is supply their contact details and details of their accommodation, and to self-isolate in their accommodation for 14 days, other than those on a short list of exemptions.

We will set out further details shortly.

### 7.3 Is this for foreign travellers only or British people returning home from holiday or living overseas?

All arrivals including British nationals will be required to provide their contact information and self-isolate upon arrival, other than those on a short list of exemptions.

## 8. Enforcement

### 8.1 How will police enforce the new rules?

The police and local authorities have the powers to enforce the requirements set out in law if people do not comply with them. The police will act with discretion and common sense in applying these measures, but if you breach the law, the police may instruct you to go home, leave an area or disperse, and they may instruct you to take steps to stop your children breaking these rules if they have already done so. The police can also take you home or arrest you where they believe it is necessary.

If the police believe that you have broken the law – or if you refuse to follow their instructions enforcing the law – a police officer may issue you with a fixed penalty notice of £100 (reduced to £50 if paid within 14 days), an increase of £40 from the previous £60 fixed penalty amount. If you have already received a fixed penalty notice, the amount for further offences will increase in line with the table below.

First offence	£100	Second offence	£200
Third offence	£400	Fourth offence	£800
Fifth offence	£1600	Maximum penalty	£3200

For both individuals and companies, if you do not pay your fine you could be taken to court, with magistrates able to impose unlimited fines.

## How to stop infection spreading

There are things you can do to help reduce the risk of you and anyone you live with getting ill with coronavirus.

### Do

- wash your hands with soap and water often – do this for at least 20 seconds;
- use hand sanitiser gel if soap and water are not available;
- wash your hands as soon as you get home;
- cover your mouth and nose with a tissue or your sleeve (not your hands) when you cough or sneeze;
- put used tissues in the bin immediately and wash your hands afterwards.

### Don't

- do not touch your eyes, nose or mouth if your hands are not clean

Stay up to date with GOV.UK

Sign up to get emails when we change any coronavirus information on the GOV.UK website.

[www.gov.uk/coronavirus](https://www.gov.uk/coronavirus)

# Annual Report

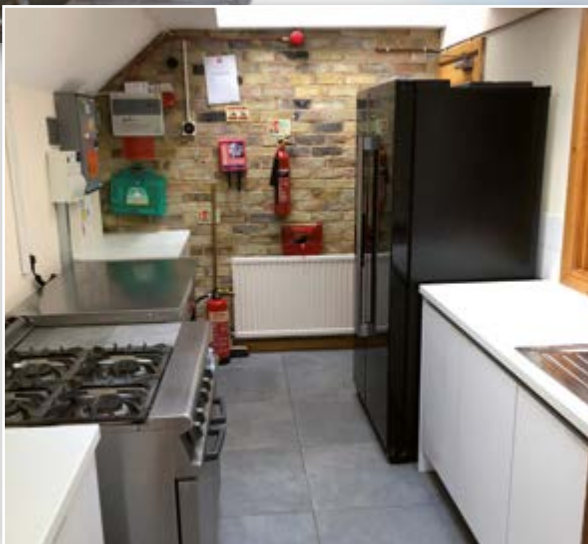
## Mayor's summary

Summing up at the Council meeting on 11 March 2020, the Town Mayor Cllr Simon Rubner said "I wish to give my warm thanks to my fellow councillors, my wife Gina, the council staff and all the residents (especially the local volunteers) who have made my experience as mayor so rewarding. Being the Town Mayor is an opportunity to engage with a wide spectrum of organisations, schools, overseas communities and faith groups some of which, although I have lived in the town for many years, I met for the first time."

## Community Services

### Fairway Hall

A major refit of the hall kitchen was undertaken in the year together with other improvements to the facility, such as energy efficient LED lighting and a new boiler system. This has resulted in Fairway Hall being a much-desired venue for both regular and casual hirers alike.



### Allotments

Site	Managed	Occupied	Occupancy
Allum Lane	47	45	95.7 %
Melrose Avenue	99	99	100 %
Stapleton Gardens	54	54	100 %
<b>Total</b>	<b>200</b>	<b>198</b>	<b>99%</b>

Allum and Stapleton allotment sites have been enhanced and supported by a number of managed bee hives, and Melrose Avenue allotment is being prepared for the siting of several new hives. In addition, all sites now have new notice boards for essential information (including Covid-19 Government guidelines and National Allotment Society Covid-19 guidance).

### Planning

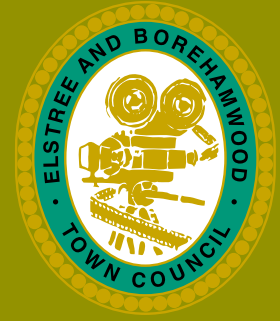
The council considered a total of 263 planning applications referred to it by Hertsmere Borough Council as a statutory consultee. Comments were made on 47 of these with concerns including the need for family sized dwellings in the community and overdevelopment.

### Site and Street Maintenance

In 2019/20 all Town Council maintained benches and public notice boards were rejuvenated and/or replaced (including installation of new items at much needed locations e.g. bench by Oak Farm bus stop and notice board at All Saint Cemetery). The project was funded through Community Infrastructure Levy (CIL) monies. As well as providing a fresh look to the town, the unified appearance of the furniture helps to promote the Elstree and Borehamwood community identity.



# 2019/20



The Council continues to maintain two war memorials (Elstree and Borehamwood), two cemetery sites and church clocks (All Saints and St Nicholas) and the film plaques on Shenley Road.

## Grants

In 2019/20 the Town Council was proud to have assisted the following organisations with grant awards to contribute to the cost of local activities which are of benefit to the Community (or a section of it).

The total sum granted in Budgeted and Community grants was £5,870 as follows:

- BETTA (Twin Town Association) £1,000 for admin costs;
- Elstree and Borehamwood Unity Network £1,000 for event costs (Diversity Festival);
- Borehamwood Brass £2,000 for equipment repair and purchase;
- Elstree and Borehamwood Basket Ball Club £370 towards coaching;
- Friends of St Teresa's £1,500 for Hall fixtures and furnishings.

## Transport Forum

The popular forum provided regular update reports by representatives of the bus and train services together with a traffic safety report by Hertsmere Constabulary. Of notable interest was a survey conducted by local Councillors on transport (and wider concerns) in the Leeming Road area for local businesses. The Forum also noted the Passenger Benefit Fund and potential improvements at the railway station.

## Community Safety Meeting (CSM)

The Elstree and Borehamwood Community Safety Meeting has grown as a public forum with regular updates from representatives of Hertsmere Constabulary on local policing statistics and concerns and update reports by Neighborhood Watch. One of the primary aims of the meeting this year was to highlight the value of the OWL (Online

Watch Link) messaging service and residents were encouraged to take advantage of this facility ([owl.co.uk](http://owl.co.uk)). The meeting also discussed issues such as online scams and the need to protect vulnerable members of the community.

## Leisure and Entertainment

**The Civic Parade:** The event took place Saturday 15 June 2019 (20 entries and two cancellations). The Town Council sourced and paid half the cost towards the Boreham Wood Football Club's open top bus for the parade (in recognition of the Club reaching Wembley).

**Families Day:** This was held on a glorious sunny day on Saturday 29 June 2019 with 51 Stalls (the greatest number since 2014). Residents enjoyed four circus shows (capacity 500 per show).

**Fireworks Night:** This was the 29th free entry fireworks display held on Tuesday 5 November 2019 with the theme of 'The Greatest Showman.' The event was enjoyed safely by over 5,000 spectators.

**Christmas Lights "Switch On" Event:** On Sunday 1 December 2019, the Mayor, Cllr Simon Rubner and actor Bob Barrett who plays Holby City character Dr Sasha Levy switched on the lights celebrating 20 years of much loved programme filmed at the BBC studios. The council provided a Santa's grotto, dry ice rink and other entertainments. Local schools performed in All Saints church. Additionally, on the following day a further event was held at Elstree and Borehamwood Railway station with musical performances and a second switch on of the lights by representatives of Boreham Wood Football Club.

## Other entertainments

The Council hosted a BBC Christmas concert at Allum Hall, coach trips for senior citizens (12 in the Summer and two in the Winter) and published four editions of the Town Crier magazine.





## Children and Young People

### School Swimming

The council supported local schools in meeting the cost of travel to The Venue swimming pool for lessons (£32,000). This much appreciated service is applauded by Head teachers and students alike.

### Youth Council

Youth Councillors have been active in several schemes including 'Make a Difference' Initiative (information provided on the Youth Council webpage and through the Town Crier) and invited all primary schools in the borough to take part. They hope to award grants up to £500 on projects that will make a difference to people living in Elstree & Borehamwood. They are working to increase Youth Council membership.

## Public Access Report and Communications

The report contents were approved by Full Council on 11 March 2020 and the report is available for inspection by any elector in the Parish area by contacting the Town Council Offices or viewing on the council website ([www.elstreeborehamwood-tc.gov.uk](http://www.elstreeborehamwood-tc.gov.uk)). The report is published in the quarterly Town Crier publication distributed to every resident in Elstree and Borehamwood (16,000 copies). Copies are available at the Town and Borough councils and at Borehamwood Library.



## Finances

The summary of Council finances at year end is as follows:

	Actual Year to Date	Current Annual Budget
<b>General Management</b>		
Income	512,557	512,387
Expenditure	355,356	378,950
To/(From) Gen Reserve	157,201	
<b>Environment and Planning</b>		
Income	8,736	7,689
Expenditure	14,384	20,800
To/(From) Gen Reserve	(5,648)	
<b>Leisure and Entertainment</b>		
Income	9,999	9,574
Expenditure	101,371	111,494
To/(From) Gen Reserve	(91,373)	
<b>Community Support</b>		
Income	0	0
Expenditure	101,371	111,494
To/(From) Gen Reserve	(91,373)	
<b>TOTALS</b>		
Income	531,292	529,650
Expenditure	505,640	558,844
Net Income Over Expenditure	25,652	(29,194)
To/(From) Gen Reserve	25,652	

## Elstree and Borehamwood Town Meetings

Residents will be notified of virtual Council and Committee meetings open to the press and public by way of the Council website ([www.elstreeborehamwood-tc.gov.uk](http://www.elstreeborehamwood-tc.gov.uk)).

# Town Councillors

2019/20 Mayor: Cllr Simon Rubner

2019/20 Deputy Mayor: Cllr Sandra Parnell

## Borehamwood Hillside



**Cllr Sandra Parnell (Con)**

cllr.sandra.parnell@elstreeborehamwood-tc.gov.uk  
020 8953 0832



**Cllr Clive Butchins (Con)**

cllr.clive.butchins@elstreeborehamwood-tc.gov.uk  
020 8207 1382



**Cllr Pat Strack (Con)**

cllr.pat.strack@elstreeborehamwood-tc.gov.uk  
020 8386 3151

## Borehamwood Cowley Hill



**Cllr Richard Butler (Lab)**

cllr.richard.butler@elstreeborehamwood-tc.gov.uk  
07706 079439



**Cllr Alpha B Collins (Lab)**

cllr.alpha.collins@elstreeborehamwood-tc.gov.uk  
07880 521971



**Cllr Michelle Vince (Lab)**

cllr.michelle.vince@elstreeborehamwood-tc.gov.uk  
07549 130736

## Borehamwood Brookmeadow



**Cllr Victor Eni (Con)**

cllr.victor.eni@elstreeborehamwood-tc.gov.uk  
07884 056187



**Cllr Simon Rubner (Con) Mayor**

cllr.simon.rubner@elstreeborehamwood-tc.gov.uk  
07870 648227

## Borehamwood Kenilworth South



**Cllr Prabhakar Kaza (Lab)**

cllr.prabhakar.kaza@elstreeborehamwood-tc.gov.uk  
07958 146582



**Cllr Jeremy Newmark (Lab)**

cllr.jeremy.newmark@elstreeborehamwood-tc.gov.uk  
020 3637 9930

## Borehamwood Kenilworth North



**Cllr Sam Lawrence (Con)**

cllr.sam.lawrence@elstreeborehamwood-tc.gov.uk  
07576 393239

## Borehamwood Shenley Road



**Cllr Rebecca Challice (Lab)**

cllr.rebecca.butler@elstreeborehamwood-tc.gov.uk  
07929 661391

## Elstree



**Cllr Farida Turner (Con)**

cllr.farida.turner@elstreeborehamwood-tc.gov.uk  
07977 380173

Town Council offices are closed until further notice. To contact a member of staff, please use the emails below.

Switzerland, France & Germany  
11/12/13 December 2020

## 3 Countries in 3 Days

**Trip Includes:**

- Christmas market in Strasbourg
- 4 Star Hotel du Parc Mulhouse
- Visit to the World's Biggest Car Museum
- Christmas village Gengenbach next to Offenburg

**Bookings now Open Until 31s October!**

Borehamwood and Elstree Twin Town Association  
call: 07852 967160  
or email for information: bellagroup@hotmail.com

Borehamwood & Elstree Twin Town Association

## Contacting the Council staff

Phone: 020 8207 1382 (all staff)

Address: Elstree & Borehamwood Town Council  
Fairway Hall, Brook Close, Borehamwood WD6 5BT

Website: [www.elstreeborehamwood-tc.gov.uk](http://www.elstreeborehamwood-tc.gov.uk)

For information on the Town Crier, contact the editor below or for FAQs and guidelines visit our website

**Huw Jones - Town Clerk and Responsible Finance Officer**

Email: [clerk@elstreeborehamwood-tc.gov.uk](mailto:clerk@elstreeborehamwood-tc.gov.uk)

**Tracey Malton - Deputy Clerk and Finance Officer**

Email: [tmalton@elstreeborehamwood-tc.gov.uk](mailto:tmalton@elstreeborehamwood-tc.gov.uk)

**Dan Salter - Entertainments Officer & Town Crier Editor**

Email: [dsalter@elstreeborehamwood-tc.gov.uk](mailto:dsalter@elstreeborehamwood-tc.gov.uk)

**Jenny Simon - Mayor's Secretary**

Email: [admin@elstreeborehamwood-tc.gov.uk](mailto:admin@elstreeborehamwood-tc.gov.uk)

**Neil Robinson - Hall Supervisor**

Email: [nrobinson@elstreeborehamwood-tc.gov.uk](mailto:nrobinson@elstreeborehamwood-tc.gov.uk)

**Paul Miller - Hall Supervisor**

Email: [caretaker@elstreeborehamwood-tc.gov.uk](mailto:caretaker@elstreeborehamwood-tc.gov.uk)

**Anne Nicodemus - Council Warden**

Email: [warden@elstreeborehamwood-tc.gov.uk](mailto:warden@elstreeborehamwood-tc.gov.uk)

**Hall Bookings**

Email: [hall.bookings@elstreeborehamwood-tc.gov.uk](mailto:hall.bookings@elstreeborehamwood-tc.gov.uk)



# MORRIS & JOEL

FABULOUS NEW DEVELOPMENT OF  
TWO, 4 BEDROOM HOMES IN BOREHAMWOOD



Two New 4 Bedroom Semi-Detached Properties in the heart of Borehamwood. Fabulous interiors, large rear garden with patio and off street parking. Close to schools, train station and shops.

Call or email on the contact details below to arrange a viewing.

MORRIS & JOEL

48 Shenley Road, Borehamwood, Hertfordshire, WD6 1DS

T | 020 3621 8080 | E | [sales@morrisandjoel.com](mailto:sales@morrisandjoel.com) | W | [morrisandjoel.com](http://morrisandjoel.com)