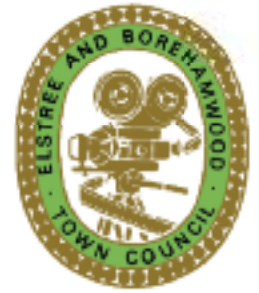


ELSTREE & BOREHAMWOOD TOWN CRIER



The magazine for Elstree & Borehamwood residents

Christmas Switch-On

Sunday 27 November 2016

All Saints Church 2pm - 6pm

(Switch-On at 4:30pm)

See page 4 and back page for more details



Christmas sponsors



All Saints Borehamwood

Hear Ye! Hear Ye!

Letter from the Mayor...



The autumn is a busy time for Councillors and a Mayor. Meetings and mayoral engagements kick off again in September and I have been enjoying getting out to a wide variety of events and connecting with a broad range of residents of our town.

Unfortunately not everyone is as proud of Elstree & Borehamwood as most, if not all, of your Town Councillors are. For example, we are as frustrated by the volumes of traffic as everyone, but we continue to work to encourage those who have the power to do something about it and make our town a better place to live and work.

Well I mentioned that this is a busy time. By the time you read this we will have already enjoyed what I am sure will have been a fantastic fireworks show and we can now look forward to a carnival atmosphere at the switch on of the Christmas lights with our very special guest, Dame Peggy, sorry I mean Barbara Windsor. We have coach trips for residents who are over 60 to Christmas markets in Rochester and Winchester and our seasonal concert from the wonderful BBC Elstree Concert Band: for details see page 5.

Personally I am looking forward to representing the town during my visit with Elaine to our twin, Fontenay-aux-Roses for their remembrance ceremony. I will be back by the time you read this.

Finally I take this opportunity to express my thanks to my Mayoress for her unflinching support. Do please invite me to your events: I look forward to meeting many more of you in the near future.

I wish you all seasonal greeting and a wonderful 2017.



Cllr Clive Butchins
Mayor of Elstree & Borehamwood
020 8207 1382



Town Crier Deadlines

Spring Edition - 4 January 2017 for delivery 3 February 2017
Summer Edition - 17 March 2017 for delivery 21 April 2017

All dates subject to change

Front cover illustration Christmas at All Saints Church Pre 1957
 by Alan Lawrence.

While we take reasonable steps to check our advertisers are bona fide. Readers should carry out their own checks before entering into any contract or arrangement.

What's inside

- Christmas Market Coach Trips Page 3
- Mencap Golf Day Page 3
- BBC Elstree Concert Band Christmas Concert Page 5
- Borehamwood Library..... Page 6
- The Royal British Legion Club..... Page 7
- Borehamwood Women's Institute Page 7
- Tuesday Drop In Page 7
- Borehamwood Brass and Box Cleve Page 8
- Borehamwood & Elstree Twin Town Association..... Page 9
- School News Page 10
- Elstree Screen Heritage Page 12
- First Impressions Page 13
- Foodbank and All Saints Coffee Morning..... Page 14
- Writers Exhibition..... Page 15
- Aldenham Country Park Page 16
- Visually Impaired Club..... Page 17
- Compost Corner..... Page 18
- Butterflies Community Perinatal Support Group Page 19
- Community Safety Partnership Page 19
- School Governors..... Page 20
- Tapestries of Faith Page 22
- Defibrillator..... Page 25
- Scouts Page 26
- Environment..... Page 27
- Rotary Page 28
- Leecliffe Big Local, DR96 & The Monday Club Page 29
- Boreham Wood Football Club Page 30
- Elstree & Boreham Wood Museum Page 31
- What's On Page 33
- Churchill's Confectionery and Youth Council..... Page 34

Advertising in the Town Crier is welcomed, with priority given to local, reputable businesses. We will limit ad space to contribute towards costs only – Elstree and Borehamwood Town Crier is not a profit making enterprise.

90mm x 128mm

£90
 +VAT

How to supply adverts

90mm x 96mm

Call us to book a space in the next edition. Any artwork must be submitted as pdf or jpg format and correctly sized for the space required as the illustration shows.

£75
 +VAT

Discounts available for annual advertising – please call to discuss.

64mm x 90mm

£50
 +VAT

64mm x 45mm

£25
 +VAT

Christmas Market Coach Trips

Are you over sixty years of age and a resident of Elstree and Borehamwood?

The Town Council is offering a chance to have a day out at a Christmas market for £7.

Choose one of the following destinations and bring your proof of age and residence (driving licence or bus pass/passport and a utility bill) along to Fairway Hall, Brook Close, WD6 5BT

Tickets available from Monday 21 November 2016.

Tickets are on a first come, first served basis and are on sale from 9am to 12 noon from Monday to Friday - strictly one per person. Please bring correct change. Tickets are non-refundable.

The fully air-conditioned coaches leave Fairway Hall at 9am prompt and will depart the destination at 5pm for the return journey. You must be able to board the coach without too much difficulty and can bring a carer (who must also purchase a ticket).



www.elstreeborehamwood-tc.gov.uk

Winchester Christmas Market
Thursday 8th December

Rochester Christmas Market
Friday 9th December



Mencap Golf Day



On a glorious late summer's day, 84 golfers tee'd off at Hendon Golf Course, all in aid of Hertsmere Mencap. Tony Cottee, ex Everton, West Ham and England striker was warmly welcomed when he took to the course and presented the prizes to the winning teams.

Paul Moser, Hertsmere Mencap's Chairman was delighted with the turnout saying "everyone thoroughly enjoyed themselves and we are particularly grateful to our sponsors, Pelicans Manufacturing and Grower Freeman Solicitors who were fundamental in helping us exceed our target for raising funds for the many activities we offer our members."

The society recently started a new weekly programme of Arts and Crafts, Cookery, Drama and Football which offers a full and stimulating week, substantially improving the quality of many of our members' lives.

The players were very pleased to have the opportunity to chat with Oliver Dowden, MP for Hertsmere, after the golf; here he is pictured with Paul Moser and Robert Errington, Hertsmere Mencap's Treasurer.

Sandra Lewis



Robert Errington (Joint Treasurer Hertsmere Mencap), Oliver Dowden (MP for Hertsmere) and Paul Moser (Chair Hertsmere Mencap)

Do you have difficulty using public transport to get to local supermarkets?

Hertsmere Community Transport will pick you up in their accessible minibus directly from your home. The friendly driver will carry your bags to your house when you return.

Ideal for wheelchair users and those who have difficulty with steps.

Trips cost from £3 return

To find out more & book your trip ring 020 8207 5055

Trustee required, please ring for details.

Hertsmere Community Transport is registered in England. Registered Charity: 1123202. Co. Ltd by Guarantee: 6426098. Registered Office Address: 2 Allum Lane, Elstree, Hertfordshire, WD6 3PJ

Hertsmere Community Transport

A charity that operates in Hertsmere providing accessible, affordable door-to-door transport for people with mobility issues, who have difficulty using public transport.

Community Car Scheme
Borehamwood & Potters Bar



Shopper Scheme

Borehamwood, Potters Bar, Bushey
Shenley, Radlett & Well End



Ring & Ride

Borehamwood, Potters Bar
& Bushey



Wheelchair Accessible Car Hire



For details ring: **020 8207 5055**



www.hertsmerecommunitytransport.org

Registered Office: 2 Allum Lane, Elstree, Hertfordshire, WD6 3PJ. Registered Charity: 1123202. Co. Ltd by Guarantee: 6426098. Registered Office Address: 2 Allum Lane, Elstree, Hertfordshire, WD6 3PJ.



Seasonal cards available from



96 Shenley Road, Borehamwood, WD6 1EB
01442 454888

Christmas Light Switch On

All Saints Church, Borehamwood
Sunday 27th November

2:00pm Borehamwood Community Choir

2:00pm Children's Concert (Tickets only)

3:00pm Borehamwood Rock Choir

3:45pm Borehamwood Brass

4:30pm Switch On

Free Santa's Grotto

Free Ice Rink

Free Kids Ride

and much more





Elstree and Borehamwood Town Council
Presents

BBC ELSTREE
CONCERT BAND

Christmas Concert

Wednesday 7th December
2016

Allum Hall, Allum Lane, Elstree, WD6 3PJ

8pm (doors open at 7:30pm)

Tickets £6

(no concessions – cash or cheque only)

Tickets available from the Town Council offices, Fairway Hall, Brook Close WD6 5BJ
(0208 207 1382)

and Allum Hall (0208 953 3414)



Photo by Vinesa Rogers

www.elstreeborehamwood-tc.gov.uk

Your Local Library

Why not borrow your books and magazines from us rather than buying them? We have a wide range of books including our Hot Picks collection for all the latest bestsellers.

Your choice of magazines includes Red, Good Housekeeping, Essentials, Vogue, Cosmopolitan, Men's Health, Psychologies, Countryfile, Black Hair and Beauty, Company, Elle, Gardeners' World, Marie-Claire, Crafts Beautiful, Women's Health, GQ, Knitting, Computer Shopper, Ideal Home and lots more ...

If reading isn't quite your thing perhaps you would prefer to hire a film



or DVD box-set, or even an audio-book, and take the monotony out of those long drives. We have something for everyone.

Borehamwood Library is the perfect place to sit and read in our window-side seating area where a range of daily newspapers is always on hand. The top floor has a study area and is also home to our impressive local studies and vintage maps collections and the museum if you wish to learn a little more about the history of Borehamwood.

The library is a great place to bring children too! We hold Baby Rhyme Time sessions on Monday morning and Toddlers Tales on Wednesday afternoon.

Other library services include PCs complete with scanning and printing as well as free Wi-Fi throughout the building and IT volunteers are on hand to help you out at certain times.

We really are quite modern here and even have a fantastic Library App so you can reserve and renew your books from your phone. Search 'Hertfordshire Libraries' in the App Store or on Google Play. All you need is your library card and PIN number to get started.

So come and visit us at 96 Shenley Road, Borehamwood where our friendly staff are always happy to help and will be able to advise on all of our services. All you need to join is one proof of ID and address.



60 Years of Borehamwood Library! Join us for tea and cake to celebrate!

The 6th December will mark the sixtieth anniversary of Borehamwood library and we would like all our friends and customers, old and new, to come and celebrate with us!

The library opened its doors in December 1956, a 'charming and beautiful place' – a Christmas present from the council to the people of the then Boreham Wood. This first branch library building on Elstree Way was provided by the county council – a perceived necessity following a string of unusual temporary premises including a garden shed and a decommissioned gas decontamination centre!

Here Borehamwood library would remain for half a century until November 2013 saw us up sticks and relocate to the more central 96 Shenley Road. Our shiny new library boasts three bright, spacious storeys; our shelves are stacked with the latest colourful books, talking books and DVDs. We are equipped with a number of public computers and offer a window side reading area where customers can peruse the daily newspapers or sit and survey the high street below.

Moreover, we do like to play host to some weird and wonderful events – some bookish, some not – for example:

- Author visits, including Sarah Mussi and Philip Womack,
- *Planet Munch* puppet show,
- Butterfly World mini-beast visit,
- *Star Wars* celebration – complete with photo-op Stormtroopers!



Alas we might have bid adieu to our card catalogues and rubber stamps but still it seems the necessity of a library has survived the test of time.

Do drop by on the 6th December from 2-4pm (there will be cake!) or come and visit us any time, we're sure to have something to offer you. I mean, we have been here sixty years; we must be doing something right!

Jocelyne Walker



The Royal British Legion Club

Boreham Wood 289, Shenley Road, Boreham Wood

Why not spend some pleasant evenings with us at our club? Most people respond by saying, ah but that's for members of the armed forces only. That is incorrect. I have never been in the armed forces and I am the chairman.

We do have some excellent facilities for you to enjoy. Our snooker room has just been completely re-decorated and re-carpeted. Also both of the tables have been recovered and cushions replaced, making them high standard tables.

We have live music every Saturday night and our own DJs Dave and John provide music for all tastes on alternate Sunday nights. We have three darts teams, including a super league team that all represent the Legion. Every Thursday night is bingo night, the more that come the better the cash prizes. We also hold special functions from time to time like fish and chips suppers with live music, quiz nights and race nights.

On 26th November we have the 60s group Chicory Tip appearing for a fish and chips special so why not come to the Legion and get tickets, £10 members £12 non-members?

Or simply just come down and enjoy a quiet drink in a nice atmosphere at very reasonable prices. We have a lovely club but we do need new members. The club membership is just £8 per year but you do need to become a member of the Royal British Legion, which can be done on line at www.britishlegion.org.uk. It is very easy.

Come and see us you will be made most welcome,

Roger Bartropp - RBL Club Chairman



Borehamwood Women's Institute

Borehamwood Women's Institute has played an active role in the community since 1923. To commemorate its continued presence in the Town a rededication of a Golden Jubilee seat will take place in November.



The original bench was funded by the Institute in 1973 and was located at the junction of Furzehill and Shenley Roads. The Town Council has arranged for a formal ceremony to take place in November to dedicate the bench outside Peacock's store on Shenley Road by the Mayor, Cllr C Butchins, and a brass plaque is to be placed on this refurbished seat.

From January 2017, the Institute's monthly meetings will take place on a Monday afternoon at Fairway Hall. Branch President Janet Martin said "We are delighted to find a new home at Fairway Hall. The Town Council staff have made us very welcome and we look forward to enjoying many meetings at this purpose built facility."

The Borehamwood WI currently has about 30 members but is keen to recruit fresh faces. If you are interested in joining this group, please contact Janet Martin on 020 8386 2844 for information.

The Institute is looking forward to having a stall at the NSPCC craft fair at Allum Hall on 20 November 2016.



Tuesday Drop-In at Fairway Hall

Come when you want and have tea/coffee and biscuits with new and old friends.

We had a great day out at the Van Hage Garden Centre in Ware thanks to Hertsmere Borough Council's £300 grant as part of their "Older Persons Day" programme.

The group had a chance to start their Christmas shopping early, and have a good look around.

They said it was fun because the sun was shining and they were able to sit and enjoy the good weather, amazing for the 4th October.

We have a full programme of events planned for November and December. Dancing, exercises and our Christmas events. Come and join us and make new friends.

Carol Jones

Tuedays

Fairway Hall, Brook Close, Borehamwood, WD6 5BT

9:30am - 12noon

No membership fees just £1.50 on the day



Borehamwood Brass is a traditional British brass band, performing a wide musical repertoire on the standard set of instruments.

The band welcomes and encourages musicians from roughly Grade 4 standard upwards. If you learned a brass instrument at school but haven't played for a while then come along and get going again – it's never too late to restart! Alternatively if you are already a playing musician who would like to try us out, please come along.

The band meets most Friday nights in the Holy Cross Church Hall in Balmoral Drive, Borehamwood, WD6 2QT, from 8pm to 10pm. If you would like to come, please phone us beforehand to ensure we are meeting.

During the next few months the band will be performing at many different events, including:

- Sunday 20th November 2016 - NSPCC Craft Fair held in Allum Hall, Allum Lane, Elstree
- Sunday 27th November 2016 - Elstree & Borehamwood Town Council Christmas Light Switch On
- Friday 9th December 2016 - Christmas Concert in St Marks Church, Barnet



The band will be bringing some festive cheer to the town, and surrounding areas, by playing Christmas carols in Letchmore Heath and Fairfield School in Radlett.

In the week leading up to Christmas, they will be playing carols in Tesco's, collecting money for the NSPCC.

For more information on Borehamwood Brass, and how to join, please contact Andrew Grady on 07802 7366628 or email argrady@btinternet.com

Andrew Grady

Box Cleva

Bob Williams received the Queens Award for his voluntary service from the Lord Lieutenant of Hertfordshire Lady Verulam.

The Ceremony which took place in Cheshunt on 15th September was attended by both the Town Mayor Cllr Clive Butchins and Borough Mayor Cllr Pete Rutledge.

Also present were Town Cllrs Sandra Parnell, Pat Strack and former Cllr Ernie Butler, who have supported the club since its inception. Box Cleva has spread from its first base in Borehamwood across much of Hertfordshire thanks to Bob and his team.

The Rotary Club of Elstree & Borehamwood welcomed former U.K. champion boxer and Lonsdale Belt holder, Commonwealth Games Gold Medallist and world title contender, Sean Murphy, to their meeting on 20th October. Sean gave a short talk about his career and his current involvement in training young boxers, as well as his work with the Borehamwood Box Cleva sessions.

The Club meets at the Hertswood Centre Potters Lane every Tuesday - 5.20pm until 6.50pm. Contact info@boxcleva.net



Borehamwood & Elstree Twin Town Association



Sustaining the town's connections in Europe

Borehamwood and Elstree Twin Town Association (BETTA) the town's partnership association has been maintaining the town's links with Europe since 1982.

In September, BETTA visited our German partner town, Offenburg, at the gateway to the Black Forest in South West Germany, to enjoy the annually - held, colourful, Wine Festival.

The group, consisting of eleven local residents, were welcomed to the town by the Lord Mayor of Offenburg Frau Edith Schreiner at the official opening ceremony held at the Vincentius Gardens in central Offenburg.

During the stay, the group also had a tour of the town and the surrounding area, as well as visiting the picturesque town of Gengenbach. Other partner towns from Austria and Italy, also visiting the Wine Festival, joined the group on the tour of Offenburg.

The entertainment on offer in the town was wonderful. One of the visitors from Borehamwood Laura Meighan commented that "This was the first time that I had ever visited Germany. The lovely gardens and colourful spectacle with the music was so wonderful. We were made to feel very welcome, and found some new friends as a result of this visit. I hope to go again next year".



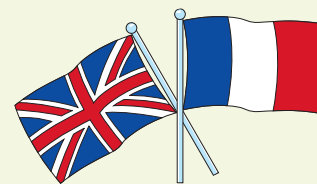
At a meeting of the partner towns Martine Eni, Chair of BETTA, spoke to the group vowing that "The friendship between our two communities will grow stronger despite the decision taken in June". She also added that "Friendship between our two towns existed long before we became part of the European Union and this will continue in the future".

The association will continue to run visits to both our partner towns every year, allowing the community from Borehamwood to sample different cultural experiences with our European neighbours.

Our next local event will be a 'Carols by Candlelight' evening. This will be held at St. Michael and All Angels Church on Brook Road on 17th December 2016 at 7pm until 10pm.

For further details about the association and our activities, please look at our web site (www.betta.org.uk) or for more information about how to become a member of the association, please contact BETTA either by email (bettagroup@hotmail.com) or by telephone on 020 3441 6510.

Sophie Eni



School News

The Yavneh Family Grows!

60 lucky children from the Borehamwood and Elstree area are the first intake of Yavneh Primary School, a Modern Orthodox Jewish Free school in Borehamwood.

The new free school sited in temporary accommodation on the site of its older sibling Yavneh College opened at the beginning of September. The children are split into two classes, zeraim or "seeds", and nitzanim, "buds".

Before seeing their new classrooms for the first time, the parents and children watched as the Chief Rabbi and others affixed mezuzot to the building doors.

Before cutting a red ribbon, Headteacher Caroline Field explained that through a creative, integrated curriculum the staff at Yavneh Primary School will ensure that all children are able to develop their personalities, talents and abilities. 'We want our children to have a lot of fun, make good choices and leave reception class with skills embedded to become independent lifelong learners.'



Saffron Green Harvest Festival

This year Saffron Green School held a wonderful and uplifting Harvest Festival service at the Holy Cross Church.

The children were initially inspired by a member of our staff who spoke to us about her regular, voluntary involvement with Borehamwood Foodbank. The foodbank supports many families in a time of crisis. This naturally led to the theme of the service as "light", where we focused on how we can bring light and love to people who might find themselves in a time of darkness.

Our service at the church included singing, dancing and thought provoking poetry to focus on both our local community and the wider community. This was followed by a coffee afternoon which raised £178.34 for Macmillan Cancer Support.

Thank you to all of our families who supported us through attendance at the coffee afternoon as well as through their generous donations to the Food Bank.



Summerswood

Charity Assembly

We started the autumn term with a brilliant assembly! Summerswood welcomed representatives from Save the Children, Noah's Ark Children's Hospice and Great Ormond Street Hospital Children's Charity. We were able to present them with cheques for £500 each. This money was raised throughout the last academic year at events such as Mad Hair Day, Christmas Jumper Day, Elstree and Borehamwood Carnival and #Woodfest. Thank you to everyone who helped us raise this money - it will be well spent by the charities and was very gratefully received by our visitors.

In these times of austerity, it is really heartening that we are still able to share the joy of giving. It is important for the children to understand that there are others less fortunate than themselves who are grateful for our generosity. The children are now working together to decide the local, national and international charities we will support this academic year.

Summerswood Sensory Room

Using some proceeds from our summer fundraiser #Woodfest2016, Summerswood had transformed a former office into a calm and peaceful sensory room for all children to enjoy. A sensory room is a special room designed to develop a person's senses, usually through special lighting, music, and objects. Mrs Norman, a dedicated and highly valued member of staff, has worked tirelessly to make her vision a reality. There are a variety of resources available for the children to access including a colour-changing bubble tube, fibre-optic lights and other sensory delights!

Summerswood has a school parliament, where children share their ideas and debate opposing ideas. One of their tasks was to name our new room and the winning idea is 'The Cosy Corner'. Thank you to Mrs Norman for her wonderful vision and to Mr Lawrence and Mr Goldney, our premises team, for making it a reality.



St Nicholas Elstree

The start of the new school year has been a busy one.

Year 6 Canal Visit



Year 4 St Albans Visit

Year 4 visited Verulamium and what a fantastic time they all had.

They visited the Museum, the Hypocaust and saw the mosaics. They also dressed up as Romans and visited the grounds of the Verulamium ruins.



Harvest Festival

On Monday 3rd October 2016, the school choir and the Worship group went to St Albans Cathedral to celebrate the Harvest Festival. The Worship group said prayers about "Joy": "The choir sang lots of songs about joy and thankfulness", - Olivia Year 6.

Our harvest charity this term is supporting the Bishop's Appeal for water in Madagascar as well as donating food to the Borehamwood Foodbank; this linked to that month's Value of Sharing.

We supported Macmillan Cancer and raised £170. The same day we had a school disco!



New Posters on Display at the Railway Station

The train station has seen many changes since the First Impressions project started its work 8 years ago. Today the station and its surroundings look little like they did back in 2008.



As part of this year's programme by First Impressions and to remind visitors and residents of those changes, a new "Before and after" poster is now on display, near the heritage panel in tribute to Dame Barbara Windsor. Beside this poster is an aerial view of Borehamwood showing the location of a selection of local points of interest.



Station Manager James Gillett said: "The Thameslink station team and our community partners felt it was important to reflect on the hard work from everyone involved in transforming the station into the public space we now enjoy. To be at the heart of the community it serves is very important to us. The new "before and after" poster brings home how the station was and where we are now, a much improved gateway. We have listened to what our customers ask, and feel the new aerial map will help them find their way to key locations in the Town."

Town Mayor Clive Butchins echoes that view: "First Impressions continues to do a fantastic job of making the gateway to our town

a thoroughly welcoming place, highlighting and celebrating the heritage of film and TV that is so important to the area. On behalf of the townsfolk I say a big "Thank You" to everyone involved: may the project long continue."

Funded by Elstree & Borehamwood Town Council and Thameslink, these posters are another step towards making the station and the town more welcoming. After all, this is "the home of UK film and television!"

For further information please contact us at contact@elstreescreenheritage.org

Bob Redman



“First Impressions” Makes National Finals

“You have to be in it to win it!”, and this year Thameslink’s Elstree & Borehamwood station was shortlisted for the “It’s Your Station” category of the Association of Community Rail (ACoRP) Awards. This is a national body which encourages community involvement with local rail stations.

Shortlisted by ACoRP for its prestigious gold award, Elstree & Borehamwood station has been transformed over several years by the efforts of local community group “First Impressions” to reflect the uniqueness of the community and its rich film and TV heritage.

Earlier this year Thameslink recognised those efforts by agreeing for “First Impressions” to formally adopt the location as “station partner”. From wall sculptures, heritage panels, stars in the pavement, a new “welcome wall” and planters, this location has gradually become less an eyesore and more a place where people feel at ease.

The reaction of James Gillett, Station Manager, was: “I am so proud of the achievements of the station partnership. Although we didn’t

win the award as such, just to be nominated in this national award was major recognition of what can be done by working together. It’s certainly given us food for thought for the future.”

Back from the awards ceremony in Southport, Bob Redman, Chair of First Impressions, said: “Of course

we’d have preferred to have won the national gold award, but to have been a finalist confirms what local residents and visitors have told us.

Elstree & Borehamwood has deserved a better station for years. We’ve now made the best of what we have, although “First Impressions” still has a few more improvements up its sleeve. But the real prize will be a new station, designed to satisfy rail passengers far into the future. Watch this space.”



From “Central Place” to “Centenary Place”

When special banners started to go up during the celebration of the local centenary of film-making in 2014, Central Place was identified as a key site.

Located halfway down Shenley Road and close to the new Community Centre as well as our only remaining cinema, it seemed the right place for banners. But over the years the long planters had been neglected, until they contained only weeds and the stumps of a few laurel shrubs.

With financial support from Elstree & Borehamwood Town Council and the enthusiastic efforts of the Youth Council, the planters received a complete make-over as part of the First Impressions initiative.

In 2015 as a measure of its enthusiasm for this reclaimed public space, the Town Council, with support from Hertsmere Borough Council, set about to rename it as “Centenary Place”

On 22nd July Mayor Clive Butchins welcomed representatives of the various groups to join him and his Town Council colleagues in “unveiling” the renamed “Centenary Place” as a lasting reminder of the Town’s very special claim to fame, its unique and continuing role in film and television production.



Heat or Eat?

This is the dilemma that many are faced with as the cold weather approaches. The Foodbank is seeking to help not only by providing food to those in need locally but by being part of the Winter Fuel project. This can help towards fuel costs. The Foodbank is also continuing, to encourage flask cookery. Flask cookery enables those with only a kettle or with very limited fuel to cook pasta, rice and other simple foods so that a hot healthy meal is available. If you are in need please let our volunteers know when you come to the Foodbank.

Foodbank vouchers are available from a number of providers locally, CAB, council offices, job centre, social workers, health visitors and others. If you are having difficulty obtaining a voucher please get in touch.

BookBank

On Mondays during our session the BookBank is there to allow children to have a book to take home free.

Tesco collection

The Foodbank only functions because of the generosity of local people who give week on week as well as at our special collections. Our next Tesco collection is on Thursday 1st December, Friday 2nd December and Saturday 3rd December. We are always in need of volunteers to give out our shopping lists and accept the food. Please email us if you can help for an hour.

We will be collecting Christmas items for our hamper bags as well as general foods.

Family Lunches

These continue to go really well. We do an hour of crafts and activities and then have lunch together. Our next meals will be in 2017 – if you would like more information, please contact us.

Borehamwood Foodbank, St Teresa's Hall, 291 Shenley Rd WD6 1TG
Open Mondays 1pm - 3.30pm and Thursdays 10am - 12.30pm
Tel: 020 3583 1109, email: info@borehamwood.foodbank.org.uk



All Saints Monthly Saturday Coffee Mornings

These are a Town Council joint initiative with All Saints Church and local organisations to provide an opportunity for residents to showcase their skills and encourage others to join them; a chance to meet old friends and make new ones over a cup of tea or coffee.

The first exhibition was of paintings from a range of genres. Hertsmere Leisure 50 Plus programme run the art group at Maxwell Community Centre every Tuesday afternoon from 2pm - 4pm. This group is thriving and the talent is amazing with the help of our tutor John.

Sheila White is the staff member who runs the group which encourages new people to join who have never done art work before. The progress is amazing within just a few weeks, after which members are happy to exhibit their work. The first exhibition coincided with the Beds and Herts Churches Bike and Hike.

We have been lucky that Jodie Cox has helped both with mounting the exhibitions and designing the posters.

Lorraine Walsh



Churches Are Not Just For Prayers

Writers' Exhibition held in Borehamwood brought many creative writing genres together at the historic All Saints Church in Shenley Road.

Writers, poets and readers joined members of our local community and dignitaries on Saturday 8th October from 10.30am to 1pm to share the amazing talent of work produced locally. As well as presenting an exhibition of works by writers and poets, The Writers in the Wood group also share and support authors and writers of all levels and also those who are keen to write or make poetry.

Those who attended the event were entertained by those that were there to exhibit their works. As were those who had popped in from our local community to support and look at the good work being done by local people.



Writers, authors, poets and readers in the community.
Back row, left to right - Dawn Barton, David Carlile from U3A, Jason Cook, Debra Schiman, Steven J Pem-beron and Councillor Pat Strack.
Front row, left to right - Josie Shingles, Jodie Cox, Lorraine Reed, Emily "Madge" Payne, Jodie Cox

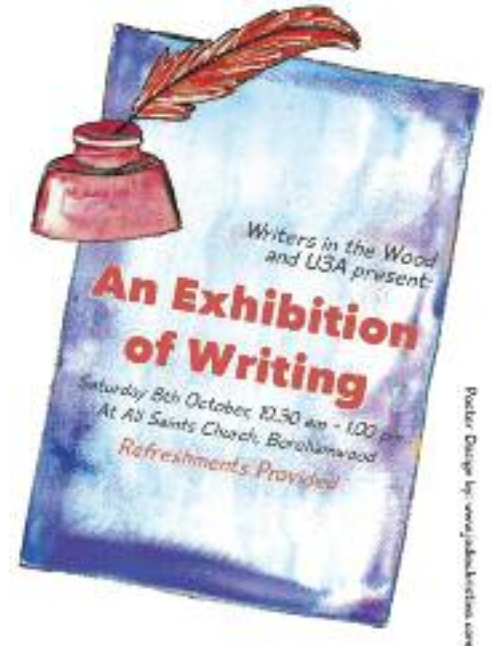
Town Mayor Councillor Clive Butchins also joined in by sharing his own written work with us.

It was nice to see so many different styles and ages coming together to share their work and read and recite their poems. Also there were talks about disabilities and how people are able to overcome these disabilities to achieve their goals, through creative writing, illustrating books and poetry.

More events will be held at the church and if you would like your event there or support for your event then let us know.

We would like to thank the Town Council and All Saints Church for putting on this event.

Jason Cook



For more details or if you wish to be involved in future events please contact Pat Strack at cllr.pat.strack@elstreeborehamwood-tc.gov.uk

The Wood

Tottenham Hotspur, Arsenal and Boreham Wood
They all play football and are good
To some their soccer is like food
You should watch them if in the mood
On Saturdays and Tuesdays you could see
Your team in action - just pay a fee
A Sunday treat that you might prefer
See an Arsenal star - not "him", but "her"
You may see goals or fouls galore
Or just some shots and passes more
The whole match could be a bore
But when exciting you'll sure want more
Make a point to support our team
A thumping win and you would beam
But if they lose, you will be sad
So let us hope the crowd are glad

Town Mayor Cllr Clive Butchins

Jodie Cox

My name is Jodie Cox and I am an
Illustrator from Borehamwood,
specialising in children's books.

I particularly enjoy illustrating fun characters that appeal to children and I like to tell stories through my illustrations. If you like my work, see more of my work on my website: www.jodiechristine.com and feel free to contact me via email: jodie@jodiechristine.com



Community Fun Day at Aldenham Country Park

Unpredictable weather was no barrier to a collective local Fun Day organised by Elstree and Borehamwood Town Council and Aldenham Renaissance at Aldenham Country Park to celebrate the 90th birthdays of Winnie the Pooh and the Queen.

A free bus service provided by Sullivan Buses allowed easier accessibility to a free day of activities for all ages who arrived through the day especially later when the weather brightened.

Aldenham Renaissance waived car park fees and farm entry so that the majority of stalls and activities could be accessed under cover.

The first bus of visitors arrived with children clutching their teddy bears for the Best Dressed Teddy Bear picnic in time for the first Hotshots Flyball demo where dogs relay race against each other with tennis balls. It is a 'sport for dogs (and for the people who own them!)' Pet dogs could sign up to have a go at the relay and join the team. Pets as Therapy dogs met visitors at the playground and were given lots of cuddles by visitors.



The 24ft tall scout climbing wall was enjoyed by a wide range of ages and this proved popular through the day. Youth Connexions brought their T shirt spraying activity and Rolling Base activity bus which was popular with getting visitors engaging with movement, games, arts and crafts.

Elstree Ward police brought the activity van and had a finger printing activity and to help educate with crime



prevention. Children were able to explore the fire engine brought by the Fire Brigade.

Councillor Pat Strack, Leader of the Town Council said a few words at the event, "It was wonderful to have so many community partners come to support this first joint initiative". Fire, Police, Youth Connexions, Herts Library Service, Scout Association, Rotary and Visually Impaired Club all supported the event. Grants from Councillors Caroline Clapper, Leon Reeve, Alan Plancey, Morris Bright and Harvey Cohen meant we could provide more varied activities: Help from County and Borough Councils. The Sullivan's bus sponsored by the Town Council was a great success. We hope this will be an event we can repeat. It was fantastic to support such a great facility. A jewel in the crown indeed'.



A Christmas Experience at Aldenham Country Park

Seasonal fun and Christmas cheer comes to Aldenham Country Park with activities and experiences on the farm starting on Saturday 26 November.

Santa Pooh at 2 will be greeting visitors and giving out free sweets daily, look for Santa's elves on the trail, learn about Christmas traditions, games and customs. A 12 Days of Christmas theme with some Victorian cheer, presents for the animals, arts and crafts and warm up with a bouncy castle at the play barn. Petting Sessions will have some present-giving for the animals. The farm shop will have seasonal gifts and delights and all year round eggs from our 195

layer hens. There are lots of paths to explore round the lake and in the woods. Visit 100 Aker Wood to see the homes of Winnie the Pooh and his friends. Even post Santa Pooh a letter. Festive pony experiences available £10-£20.

Usual farm entry and car park charges apply. Car parking £4.50 at the Farm Shop or £4 online. Farm entry is £3 per person over the age of 2 or a Feed the Farm ticket for £10 up to 5 people. Animal feed is included with farm entry. More information on Facebook www.facebook.com/aldenhamcountrypark.co.uk or email michelle@aldenhamcountrypark.co.uk

Michelle Artiss



Visually Impaired Club

If you can't see the sea at least you can feel the briny



Since the Visually Impaired Club was set up in 2013 it has become an annual treat for the members to be taken on a trip to Southend.

Some might not be able to see the sea but they are invigorated by the sea air and even fish and chips taste better at the seaside.

At 9.15am on Friday 23rd September the luxury coach from B&L Coaches left the car park of Maxwell Park Community Centre and by 10.45am the members of the VIC were enjoying coffee on the sea front opposite the pier.

After a fish and chips lunch at the Fisherman's Wharf, now a favourite of the club, the members were taken to the end of the pier, some being pushed in wheelchairs by club helpers, this year on foot as the train was not operating.

A great day was had by all and the happy group arrived back at Maxwell Park at 4.30pm.



Visually Impaired Club holds successful Macmillan Tea Party

Rather than holding a coffee morning on Friday 30th September, the Visually Impaired Club invited people to a tea party and as a result has been able to send £900 to Macmillan Cancer Care.

During the afternoon event, held in St Teresa's Parish Centre, guests and the members of the Visually Impaired Club were entertained with music from the group Ephesian, based at Holy Cross Church, encouraged to stimulate their memories with a quiz, enjoy tea and sandwiches and masses of cakes made by Sasha Capocci who is the secretary of the Visually Impaired Club.

The Mayor, Cllr Clive Butchins with Mrs Elaine Butchins was in attendance, and he helped with the raffle that added to the total amount raised.

The chairman of the Visually Impaired Club, David Clout, said 'Sasha Capocci and her team of helpers organised a wonderful afternoon that was both a social and a financial success for Macmillan Cancer Care.'

David Clout



Usually the club meets in the community centre on Friday afternoons between 1.30pm and 4pm and membership is open to blind and partially sighted people over the age of 20 years.

For further information, please contact David Clout at david.clout@btinternet.com or phone 01923 854403.

Compost Corner



A Recipient's Honest Tale by Ashley West

My wife has kept an allotment at Melrose for the past ten years or so.

My earliest memory of allotments was taking a walk back to my home in the dark with my uncle, when my mum was probably having her second or third child (I'm the first), and passing through his allotments, where, as I recall, he picked bunches of rhubarb to give to my parents. I remember the dark, his hand in mine, and the smell of the freshly picked rhubarb. The first benefit that comes to mind from Anne having an allotment is that I get plenty of space to indulge in my own thing for hours on end! She disappears out of the front door as if 'on a mission', and when she returns it's pleasing to see the 'evangelical glow' that surrounds her as she describes the miraculous amount of weeding she's done. Sometimes the result of all that hard work is all too clear to see when she returns full of glee, laden with armfuls of fruit, vegetables and flowers. These hang about in untidy piles in the kitchen before being dealt with - sometimes a danger to those trying to get to the kettle! Her tomatoes this year were the best I've ever tasted, and sweeter than anything you'd get in the shops.

Probably the greatest reward is when I'm enjoying a wonderful bowl of soup, a salad, or crumble and I realise, or am reminded in no uncertain terms, that almost everything is fresh from the allotment. It makes a real difference that it not only tastes great, but there's no danger of pesticides, and it's the result of a whole process from preparing the ground to harvesting, that has involved my wife engaging lovingly with seed and soil, with her own fair hands. Of course there are times when leaving Anne to her own devices arouses some suspicion to creep into my mind - "so WHO did you say has been rotovating your plot for you?" To her credit though, she never gives me a hard time in terms of asking for my help or involvement - I know that should I dare to begin to get involved, that would be it - I'd take over in no time! Once in a blue moon though, I can be seen trimming the verges and picking the odd

raspberry, stalk of chard, or pear - usually with Tom Cunningham looking on, standing proudly by his immaculate rows of potatoes, probably thinking "about time too!" or "is that it?" when I march off after only ten minutes. I think I partly redeem myself by having a long chat with him about traditional Irish music (I play Irish fiddle) and the musicians he knew in London from the old days, but that may be wishful thinking!



Ashley West

It makes Anne happy on the occasions when I consent to come for a walk up to the allotment to see what she's been up to, and when I do (which probably isn't as often as she would like), she's usually keen to get confirmation as to how good it's looking. To be quite honest, an allotment rarely strikes me as being a wondrous thing to behold (although Tom's is an exception!), but rather an ongoing process with an endless coming and going, and changing - it's not always a tidy affair! I know as a painter that the real work often goes unseen but the evidence of the hidden process is there if you care to look, and I guess it's the same with her allotment. Perhaps the most rewarding part for me is the way it nourishes her on so many levels - one can see that in the glow it gives her and the sparkle in her eyes, her feet firmly planted, and her spirit soaring.

Good news for gardeners!

Fresh garden produce is a great way to healthy eating and all residents of the Elstree and Borehamwood are eligible to apply for an allotment plot on which to "grow their own".

For several years, the Town Council had a waiting list for the two sites it currently operates, one off Furzehill Road and the other near the junction with Allum Lane and Watling Street, Elstree. However, currently we do have a small number of vacant plots just waiting for a new gardener to start getting them ready for next year's growing season.

If you are interested in becoming an allotment holder, please contact the Town Council at the address/phone/e-mail on page 35, giving your full name, address, contact phone number and your date of birth - because, if you are over 60 years of age, you only pay half of our very reasonable yearly rent.

We look forward to hearing from you, please email admin@elstreeborehamwood-tc.gov.uk



Butterflies Community Perinatal Support Group

As mums, we are all aware of the beauty of pregnancy, birth and being a parent. What we don't talk about so much is those times when it all seems like an uphill struggle.

We all have days like that, parent or not and we can usually brush them off and, after a good night's sleep, everything seems better again. For some people this ability to brush off the bad days gets interrupted for a while. For some those bad days can seem endless.

This is exactly what happened to our founder, Rebecca McCann. After the birth of her second baby those bad days got worse and worse, the world became a scary place where everyone was out to get her, she couldn't get past the fact that she was a 'terrible mum' (she wasn't!). Rebecca was diagnosed with a post-natal depression which manifested itself as extreme anxiety and quite frankly some very bizarre behaviour! Rebecca was fortunate that she was a trainee psychotherapist at the time and so, when she had recovered and her friend confided in her that she was going through the same experience, she was motivated to

set up Butterflies Community - a safe space for mums to talk about how they really feel. A place where women can drop the veneer and just be natural.

Caroline, Crystal and Wendy have brought Butterflies Community to Maxwell Park Community Centre, Borehamwood, WD6 1JJ, to offer women support through pregnancy and their first year or so of being a mum. The group provides peer support and is open to all women. It's a free group (although donations are always very gladly accepted) where mums can be themselves.

For more information about joining Butterflies Community, please contact Rebecca on 07969 315591 or contactus@butterfliescommunity.support

Rebecca McCann



Community Safety Partnership

Borehamwood and Elstree's 'Make a Difference Event' was organised by Hertsmer Community Safety Partnership (CSP).

It was a great event with 75 attendees from the public, councillors and other organisations covering a wide age range and reflecting some of the diversity within the town. The Theatre group Arc provoked discussion.

Facilitators encouraged discussion on what is good about the town, what we like about living here and what we would like to change or improve if we could.

Analysis of these ideas will be undertaken and will be discussed at the next Borehamwood and Elstree CSP meeting on Monday 6 February, 6.30pm at Civic Offices in Borehamwood.

Zoe Keyte

Maxwell Park Community Centre

Affordable, bright spacious hall seating up to 180, meeting rooms and mirrored dance studio are available for hire with use of kitchen and car park



Regular activities include B'nai Maccabim Synagogue, Boot Camp, Carers Coffee Morning, Church Groups, Club Sandwich, Cocaine Anonymous, Fifty+ Art, Bowls & Table Tennis, Hartbeeps, Irish Dancing, K's Dance, Keep Fit, Line Dancing, Movedancesweat, Music Lessons, Pole Dancing Classes, Shogun Karate, Super Soccer Stars, Table Tennis Juniors & Seniors, Vaks Tuition, Visually Impaired Club, We Moves She Moves, Yoga - Dynamic & Pregnancy.

See website for details

For private or regular hire please call 020 8953 4295 or email enquiries@maxwellpcc.org for more information, please visit www.maxwellpcc.org

Baby Sensory
Innovative Learning for Kids

We've done the research, so you can enjoy the fun...

Baby Sensory
Innovative Learning for Kids

Sessions from birth to 3 years old
For classes in Borehamwood, Busset, Southgate, Colindale and Friarley Hill

www.babysensory.com
020 820 1480 borehamwoodbabysensory.co.uk

24hr emergency

**domestic locksmiths
auto locksmiths
shoe repairs
key cutting**

Emergency number
020 8201 1480
020 8207 2066
mobile: 07831 806 536
www.aylocksmiths.co.uk
emergency.locksmith@virgin.net
**4 Furzehill Parade, Shenley Road,
Borehamwood, WD6 1DX**

School Governors. Who Are We?

Not quite the butcher, the baker, the candlestick maker, but we do represent a cross section of people in Borehamwood and Elstree.

Hertsmere and Town councillors are amongst our numbers plus ministers representing all faiths.

Parents, too, make an important contribution by representing those who have a more direct interest in how good our schools are. Most of the time we are in agreement with decisions being made by schools but sometimes we have to ask hard questions to ensure that aspects such as safety are good and best value is achieved in spending. Having people who have expertise in these areas is something all governing bodies seek to ensure. Perhaps you could help here?

It is great to know that 90% plus of Hertfordshire schools are good or better and that the averages attained by Hertfordshire children are higher than those nationally. Our governors play no small part in achieving this and if you are interested in helping to make a difference, contact your local school or go to the website; www.hertfordshire.gov.uk/services/edlearn/getinvolved/governors/be_cschgov

For an informal chat about being a governor contact Geoff Strack on 020 8386 3151 or by email at geoff.strack@ntlworld.com

Geoff Strack



Christmas at Aldenham Farm

Petting Sessions with Presents for the Animals
12 Days of Christmas Round the Farm
Christmas Traditions and Customs
Bouncy Castle in the Play Barn
Festive Farm Shop
Pony Experiences
Santa Pooh at 2
Elf Trail

Farm Entry £3 per person or Family Farm Pass £10 for up to 5 persons
 Car Parking £4.50 or £4 online
www.aldenhamcountrypark.co.uk

ALDENHAM COUNTRY PARK
 A Free Range Experience

CROSS ROADS CARE FOR PEOPLE NOT PROFIT

Recruiting Now

We are currently seeking Care Support Workers to join our dedicated team helping people in their own homes.

Duties may include:
 assisting with daily living tasks, such as washing, dressing, shopping and light domestic duties.

We also require Care Support Workers in and around Borehamwood to provide a family carer with a break by taking over the caring role for a few hours.

Experience preferable, but not essential as full training will be given.

Applicants must have a full driving licence and use of a car.

CROSS ROADS CARE
Hertfordshire South

Crossroads Care Hertfordshire South is a registered Charity based in Borehamwood

Why choose Crossroads Care?

Our highly skilled, professional support team are trained to manage the care needs of people with all disabilities.

What can we offer?

A flexible personalised service to meet your needs which can include assistance with:

- Washing, dressing and continence care
- Medication
- Nutrition
- Shopping and other household tasks
- Night sits

Advice and support for Carers who are caring for people with a wide range of disabilities including Dementia, Alzheimer's or end of life support.

Breaks for Carers—we can provide a trained Care Support Worker to take over your caring role for a few hours allowing you time for yourself to pursue a hobby or just relax.

Day Services—Borehamwood Seniors is a day club for older people to enjoy lunch and activities in the Borehamwood area. Home from Home is a day service for small groups, socialising in a private home setting.

For more information call: 0208 905 1158
or email info@hertfordshirecrossroads-south.org.uk

Our service is audited against standards specified by the County Inspectorate and Care Quality Commission.



HERTS INCLUSIVE THEATRE

 **A STAGE FOR EVERYONE**

WATFORD CHILDREN'S THEATRE
 Tuesday 4.45-6pm, Ages 5-12
 The James Theatre, Watford Grammar School for Boys

WATFORD YOUTH THEATRE
 Tuesday 6.15-7.45pm, Ages 12+
 The James Theatre, Watford Grammar School for Boys

BOREHAMWOOD CHILDREN'S THEATRE
 Wednesday 4.30-5.45pm, Ages 5-12
 The Ark Theatre, Thrift Farm Lane, Borehamwood

BOREHAMWOOD YOUTH THEATRE
 Wednesday 6.00-7.30pm, Ages 12+
 The Ark Theatre, Thrift Farm Lane, Borehamwood

For more information or to secure your place, please visit our website or get in touch!


Website: www.hit-theatre.org.uk
 Email: admin@hit-theatre.org.uk
 HIT Landline: 01923 216951
 HIT Mobile: 07857 986364



 HERTSINCLUSIVE  HERTS.INCLUSIVE





Charity Number 1136031



EBRA Chairman: Andy Lewis
chairman.ebra@gmail.com
 Mobile: 07930 637 673
www.elstreeborehamwoodresidents.co.uk
  @borehamwoodra14

ELSTREE & BOREHAMWOOD RESIDENTS ASSOCIATION

Started in 2013

Open to all residents in Elstree and Borehamwood.

Our mission is to safeguard and promote the interests and views of local residents on matters concerning the community e.g. housing, infrastructure, local environment, social facilities and amenities in the area.

CURRENT ISSUES INCLUDE:

• Saving Meadow Park • Planning • 'Aldenham Reservoir'

NEXT THREE MEETINGS:

Tues: 29th November, 17th January, 21st March - arrive at 7.50pm (meeting is from 8pm to 9.30pm prompt)

WHERE:

**St Teresa's Parish Centre (next to St Teresa's church)
 Near: 291 Shenley Road, WD6 1TG**

**£6 annual household membership or £2 entrance fee.
 Free parking at rear of church & free refreshments available.**



THE VENUE

ACTIVITIES FOR THE WHOLE FAMILY AT THE VENUE

Facilities for everyone:

- State-of-the-art gym with cardiovascular and strength equipment plus new functional training area
- Over 80 fitness classes every week, including youth gym
- 25m indoor pool and teaching pool
- Health Suite
- Ringnet sports at Hertswood Centre
- Discounted Col. "Proudly Serving" Starbucks™

Especially for the children:

- Swimming lessons - 6 days a week
- Birthdays party packages
- Crèche facilities available
- Play scheme and holiday activities
- Two softplay areas

The Venue
 Elstree Way, Borehamwood, Herts, WD6 1TY
CALL NOW: 020 8386 9886

www.hertsmereleisure.co.uk info@hertsmereleisure.co.uk

Hertsmere Leisure manages Borehamwood Leisure in partnership with Watford Borough Council. The venue is an approved charity (Charity Number: 801947).



Business Forum

In a bid to increase economic activity in the area and provide a conduit for concerns of local businesses, Elstree and Borehamwood Town Council have been sponsoring Business Forum meetings.

So far they have proved popular with a number of local business people. Whether you work or live in the area, all business persons are welcome to come along.

Our next meeting is on
 Wednesday 25 January 2017
 at 7.30pm at Fairway Hall,
 Borehamwood WD6 5BT.

Why not come along, find out more and give us your ideas for moving the Forum forward?

Tapestries of Faith

The Town Council supports the freedom of residents to choose a faith or to have none and it is proud of the rich tapestry of religious groups within the local community, including those that meet at Fairway Hall such as the Radlett Reform Synagogue and the Borehamwood Islamic Centre.

Hertsmere Forum of Faith

100 people from 4 different faiths represented in Hertsmere gathered in the Civic Offices Council Chamber on Sunday 18 September for the annual public event organised by Hertsmere Forum of Faith and supported by Hertsmere Borough Council.

The theme was 'Travelling together in peace' and a series of presentations were given explaining the place of pilgrimage and spiritual journeys in the different religions. These were given by

children from the Hindu Bhaktivedanta Manor School, Catholic and Church of England Christians, children and their imam from the Borehamwood Islamic Society and the Rabbi of the Rambam Sephardi Synagogue. The programme closed with singing by young people from the Pentecostal New Life Assembly.

Refreshments typical of the different faith traditions were served afterwards giving an opportunity for people of different religions to meet and chat.



Hertsmere Forum of Faiths Inter Faith Week

13th - 20th November

Annual General Meeting

Tuesday 22nd November 2016

In Committee Room A, Hertsmere Civic Offices
Elstree Way, Borehamwood WD6 1WA

- Election of trustees and officers
- Report on negotiations with Hertsmere Borough Council for the establishment of a multi-faith worship and community centre.
- Annual report and accounts

Guest speaker: Fiyaz Mughal of Faith Matters: 'Recent trends in incidents of hate crime'.



St Teresa's International Day

Every October St Teresa's RC Church holds an International Day.

Congregants bring food from their country of origin and all share the meal together.

There is a celebration of the diversity but also that which brings people together as a community.

St Andrews

St Andrews congregation celebrated its 60th birthday with a programme of hymns and memories of events in each decade.

Visitors from other faiths came to join the celebrations. Town Mayor Councillor Clive Butchins, and Hertsmere Borough Mayor Pete Rutledge presented service awards to pilot's leaders and to the young pilots themselves. The pilot's awards were to reward their hard work and community involvement over the year.

After the lively service everyone enjoyed the refreshments and birthday cake.



St. Paul's Lutheran Church

Probably we all have seen the new five pound bank-note with a picture of Sir Winston Churchill on one side. The text under it says: "I have nothing to offer but blood, toil, tears and sweat".

I must admit there is a strange authenticity in the text. Strange because it is not how we usually think and speak about things (shouldn't we all think and talk in more positive way?). It is authentic, because our lives in general are like Churchill describes and mostly not "happily ever after". Sure, talk like that does not please our ego or raise our self-esteem to new heights but nevertheless it is authentic. We might not say it but that is what we all think deep in our hearts.

Christmas is coming soon. If we look carefully, there also is a Churchill's kind of authenticity in the story of Christ. The birth of the Son of God could have been announced in all royal courts with the playing of finest musicians. People could celebrate His birth in the luxury concert halls while sampling most flavourful wines at the most exquisite banquets. Instead, Christ was born in a non-hygienic stable. The message was delivered to the representatives of the lowest social class at that time – shepherds. Indeed, there is something very authentic in the Christmas story. Probably even more so if we take into consideration Christ's life afterwards. It all

ended on the cross - an utter failure, in terms of this world. Blood, toil, tears and sweat. But there is a sudden twist to the story, as we know. Because of what started in Christmas God is actually saying to us: "I have nothing to offer but forgiveness of sins, bliss, my Kingdom and life everlasting." Blessed Christmas to everybody!

Rev Dr Didzis Stilve
Pastor of St. Paul's Lutheran Church in Borehamwood



Elstree & Borehamwood Christian Council

Celebrate Christmas 2016 with us



Roman Catholic Parishes of Borehamwood

St Teresa of the Child Jesus, 291 Shenley Road &
SS John Fisher & Thomas More, 28 Rossington Avenue

Live streaming of all services takes place at St Teresa's and can be viewed at www.churchservices.tv/borehamwood or through the link on our website

Sat 24th Dec	10am-1pm 5pm	Extended Confessions Christmas Vigil & Children's Nativity (St Teresa's)
	8pm 11.30-12pm 12am	Christmas Vigil Mass (St Teresa's) Carols (SSJFTM) Midnight Mass (SSJFTM)
Sun 25th Dec		NATIVITY OF THE LORD
	8.30am 10am Noon	Mass (SSJF&TM) Mass (St Teresa's) Mass (SSJFTM)
Mon 26th Dec		ST STEPHEN
	Noon	Mass (St Teresa's)
Tues 27th Dec		ST. JOHN EVANGELIST
	9.15am	Mass (St. Teresa's)
Thurs 29th Dec		ST. THOMAS BECKETT
	9.15am	Mass (St Teresa's)
Fri 30th Dec		FEAST OF THE HOLY FAMILY
	9.15am	Mass (St Teresa's)
Sat 31st Dec		Vigil: SOLEMNITY OF MARY, MOTHER OF GOD
	9.30pm	Mass (St Teresa's) followed by Parish Party in Hall
Sun 1st Jan		MARY, THE HOLY MOTHER OF GOD
	8.30am 10.00am Noon	Mass (SSJF&TM) Mass (St. Teresa's) Mass (SSJF&TM)

King's Grace Chapel (Redeemed Christian Church of God)

Holy Cross Church Hall, Balmoral Drive, WD6 2QU
tel: 0785 296 3659; 0795 769 4417

Sun 25th Dec	11:30am-12:30pm	Sunday Service
Sat 31st Dec	10:30pm-12:30am	Watchnight service
Sun 1st Jan	11:00am-1:00pm	Sunday Service

Church of England

Team Parish of Elstree & Borehamwood Parish Office (020) 8905 1365
Weekdays 10am-12:30pm. www.borehamwoodchurches.org.uk

All Saints Church

Shenley Road, WD6 1EB
Sun 27th Nov 3:00pm
Sun 18th Dec 11.00am
Christmas Eve 4.00pm
11.30pm
Christmas Day 10.00am

Revd Tim Warr (020) 8207 6603
Schools Carol Concert
Carols, Lessons and Communion
Crib Service
Midnight Mass
Family Communion

Holy Cross Church

Balmoral Drive, WD6 2QU
Sun 18th Dec. 9.30am
7:00pm
Christmas Eve 4.00pm
Christmas Day 10.00am

Revd Christine Hina (020) 8953 2183
Nativity Service
Lessons & Carols followed by mulled wine and mince pies
Crib & Christingle Service
Family Communion followed by Christmas dinner at noon - all welcome

St Nicholas Church

Elstree High Street, WD6 3EW
Sun 27 Nov 6.30pm
Sun 11 Dec 9.30am
Sat 17 Dec 10am-1pm
Sun 18 Dec 4.00 pm
Christmas Eve 4.00 pm
11.00 pm
Christmas Day 9.30 am

Revd Lucy Dallas (020) 8327 0841
Advent Candle-lit Carol Service
St Nicholas Day Service
Children's Craft and Fun Morning
Christmas Candle-lit Carol Service
Children's Crib Service
Midnight Mass
Family Communion

St Michael & All Angels Church

Brook Road, WD6 5EQ
Sat 26 Nov 11am-2pm
Sun 18th Dec. 4:00pm
Christmas Eve 5:00pm
11:30pm
Christmas Day 10:00am
Sun 1 Jan 10:00am

Revd Louise Collins (020) 8953 2362
Christmas Fair in Church Hall
Advent & Christmas Carol Service
Christingle Service
Midnight Mass
Family Communion
Parish Communion

Borehamwood Baptist Church

12 Furzehill Rd., Borehamwood <http://www.borehamwoodbapch.org>

Sun 18th Dec.	10.30am	Sunday Service with children's nativity
	6.30pm	Carol Service
Christmas Day	10.30am	Christmas Morning Service

St. Andrews U.R.C Church

Aycliffe Road, Borehamwood

Sun 18th Dec.	10:15 am	Nativity play
Wed 21st Dec	7:45 pm	Carols by candlelight
Christmas Day	10.15 am	Christmas Day service with mince pies

International Christian Fellowship

Manor Way, Borehamwood WD6 1QY
www.icfellowship.org Patrick Bateman (Pastor) 020 8207 1837

Sun 27th Nov.	5:00 pm	Youth & Children's Christmas Service
Christmas Day	10:00 am	Joint service with New Life Assembly at Manor Way
Sat 31st Dec.	10:00 pm	New Year's Eve Service with New Life Assembly in St Michael's hall

New Life Assembly (Redeemed Christian Church of God)

info@nlaborhamwood.co.uk Tel: 07931784966
Christmas Day 10.00am Joint Christmas Day Service with ICF
Venue: International Christian Fellowship Manor way WD6 1QY
Sat 31st Dec. 10.00 pm Watchnight Service (New Year's Eve)
Venue: St Michaels & All Angels church Hall Brook Road WD6 5EQ

St. Paul's Lutheran Church

St. Paul's Close, corner of Cranes Way & Furzehill Rd. WD6 2DB
www.stpaulslutheran.co.uk (020) 8953 3308

Sun 18th Dec	6:00pm	Carol & Verse Service
Christmas Eve	6:00pm	Christmas Day Service
Christmas Day	9:30am	Christmas Day Service

Defibrillators in Schools

The Town Defibrillator Team are Town Councillors Clive Butchins, Sandra Parnell, Gary Silver, Eric Silver and Committee member Lawrence Stack.

The Town Defibrillator Team continued with another phase putting Defibrillators in schools. Nine of the 10 Primary schools received £300 funding each towards the purchase of a defib: Cowley Hill, Kenilworth, Meryfield, Monksmead Parkside Saffron Green, St Nicholas, St Teresa's and Summerswood.

The DfE and NHS initiated a scheme to provide half price defibs for schools. The total cost to schools is £453. As part of the drive to get Defibrillators in key locations around the Town. The Defibrillator Team decided to raise part funding for the schools. The schools contribute £153 towards the cost. Donations came from Borough Cllrs Susan Brown, David Burcombe, Victor Eni, Gary Silver, Alan Plancey, Farida Turner and county Cllrs Caroline Clapper and Alan Plancey and the Rotary Club. Verity MacLachlan is carrying out training for the schools this term.

McNicholas at Elstree held a fun day in September to raise funds for a Defibrillator. This will be mounted in the foyer and available to all offices in the vicinity. The main reception at McNicholas is open 24/7.

The map opposite shows how many defibrillators are now at key locations across the Town. We are proud to have had such support from so many organisations across the Town as well as members of the public to contribute to this campaign.



St Teresa's School

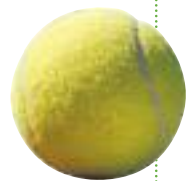


Monksmead School

Elstree Lawn Tennis Club

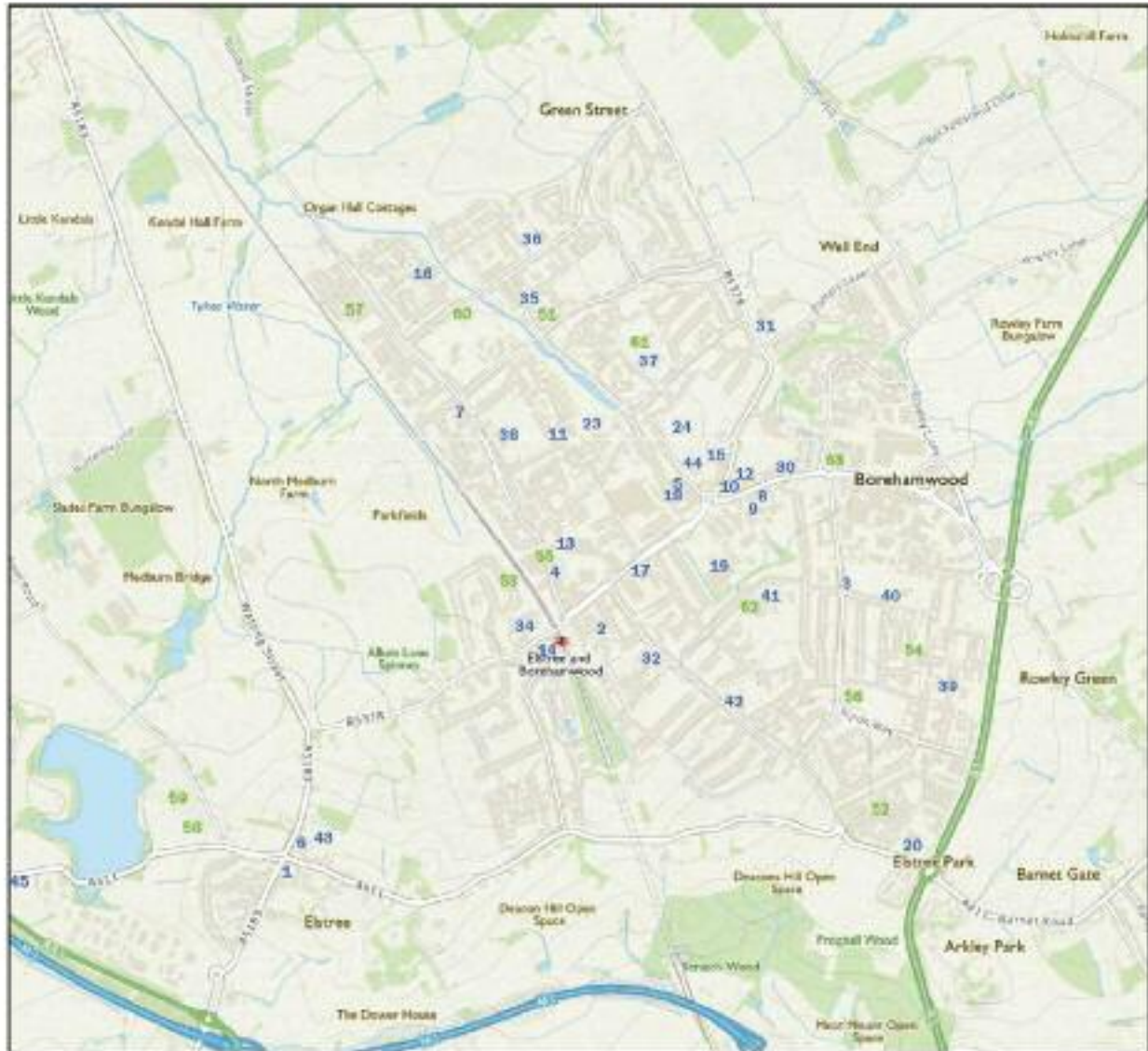
On 13th November the Club held a very successful fund-raising quiz supper with questions set by member Robert Morris.

The several hundred pounds raised is to go towards an Automatic External Defibrillator for the club.



ELSTREE & BOREHAMWOOD DEFIBRILLATOR PROJECT

EXISTING AND POSSIBLE LOCATIONS



Amended 31/10/2016 by Clive Bachin

Existing locations	16. SS John Fisher & Thomas More *	42. Summerswood Primary School
Possible others	17. 96 Shenley Road	43. St. Nicolas' C of E Primary School
1. Cornerhouse Dental Care	18. Fairway Hall	44. St. Teresa's Catholic Primary School
2. Drayton Road Dental Practice	19. Tesco	45. McNicholas
3. Manor Way Dental Practice	20. Morrisons	51. Windsor Hall
4. Grove Medical Centre	23. Aberford Hall	52. Parners Way Centre
5. Fairbrook Medical Centre	24. Boreham Wood F.C.	53. Federation Synagogue
6. Schopwick Medical Centre	30. The Venue	54. Holy Cross (Balmoral Drive)
7. Theobald Medical Centre	31. Hertswood Centre	55. Kinetic Centre
8. Fire Station	32. The BECC	56. Three-ways Community Centre
9. Ambulance Station	34. Allum Hall	57. Organ Hall Community Centre
10. Police Station	35. Community Shop (Leeming Road)	58. Elstree Lawn Tennis Club
11. Elstree & Borehamwood Synagogue	36. Parkside Primary School	59. Elstree Cricket Club
12. Hertsmere Borough Council	37. Cowley Hill Primary School	60. Borehamwood Youth F.C.
13. Marks & Spencer	38. Meryfield Community Primary Sch.	61. Woodlands Primary School
14. Elstree & Borehamwood Station	39. Saffron Green Primary School	62. Yench College
15. St. Teresas Parish Centre *	40. Kenilworth Primary School	63. Elstree U.T.C.
	41. Monksmead Primary School	



Elstree District Scouts



Scouting in Elstree District

Lots of events have been happening for all of our groups in Elstree District so far this term.

The camping season was kicked off by 1st Radlett Scouts who held a successful patrol leaders camp at Well End Activity Centre near Borehamwood. Well End was also the venue for the District and County Cub Cyclocrosses held in September and October. The District Cyclocross was won by 1st Shenley Cubs and the first eight cubs from the District represented us in the County event where they displayed great teamwork and had a brilliant afternoon.

The camping continues at half term with a camp in the Peak District for Scouts and Explorers from across the District.



Tree Planting

2016 marks 100 years of Cubs Scouts and groups around the country have been celebrating this event.

Cubs in Elstree District were delighted to take part in a special tree planting ceremony on Tuesday 13th September. The ceremony was organised by Pat Strack of the Elstree and Borehamwood Town Council who is also the Chair of Elstree District Scouts. A donation was given by Cllr Farida Turner from her WIIS fund. Gristwood and Toms supplied the tree and helped to plant it and install a special plaque commemorating the occasion, which was kindly designed and sourced by Bob Redman and Mike Rollins.

Cubs from groups in the District attended along with their leaders and other local dignitaries. District Commissioner, Helen Hawthorne said, 'We are very grateful to Pat and the Town Council for helping us to celebrate this special year for the cubs and for commemorating the occasion with a plaque.' After the ceremony and the photos, the cubs, leaders and guests went to Fairway Hall to continue the celebrations with refreshments and of course a large birthday cake!

This is the second major event that the local cubs have attended this year as part of the celebrations - 80 cubs and their leaders also took part in a special camp in July with about 3000 other cubs from Hertfordshire. The final celebration of the year will be a promise party for the District cubs in December. We are very keen to find the oldest ex-cub locally as part of our celebrations who would be willing to come and talk to the cubs about their experiences in scouting at our promise party.



If you can help with this or know someone who could please contact
dc-elstree@hertfordshirescouts.org.uk

Scouting in Elstree District takes place most nights of the week and is run by volunteers.

If you would like to get involved in Scouting or would like your children to be involved please email
dc-elstree@hertfordshirescouts.org.uk

Woodcock Hill Village Green

Campaign to Protect Rural England Award scheme.

The Woodcock Hill Village Green committee nominated Alex Melson for an individual award for his work on Woodcock Hill. Judges came to visit the site in August to see how well Alex's Management Plan was progressing. They talked to committee members and saw articles and photos as evidence of community involvement in the project.

Alex was shortlisted for an award. Committee members Clive Butchins, Yvonne Harris, Sandra Parnell and Pat Strack attended the Awards ceremony with Alex at County Hall on Tuesday 18th October.

Alex was highly commended for his work and presented with a framed certificate of achievement by Hertsmere Mayor Cllr Pete Rutledge.



Tesco Green Bag Grant

Woodcock Hill Village Green have been successful in obtaining a £8,000 grant from this scheme.

Three local organisations will receive £8,000. Shoppers at Tesco will have the opportunity to obtain a green token to vote for their favourite project. For the project that attracts the most tokens the grant will increase to £12,000 and for the second to £10,000. Tokens were in store from 31st October to 9th November.

Three proposals were submitted by Woodcock Hill Village Green with details of how £8,000 or £10,000 or £12,000 would be spent. Proposals included removing the brambles on the lower field to restore the meadows, environmentally friendly footpath upgrades, restoration of the dew ponds, planting willows to soak up the water at the bottom of the hill and building a new pond to provide habitats for water creatures. Depending on the amount of grant some or all of these works will be carried out.



Reviva Waste

Elstree Village Preservation Society and Elstree and Borehamwood Green Belt Society committees are concerned that Reviva Waste composting company has not yet resolved the smell nuisance.

In the June 2016 court case, brought by Hertsmere Borough Council Environmental Health Department, the company were told to clean up their site. The company offered to enclose all the waste in an attempt to contain the stench. The deadline was September 30th. However, no plan was forthcoming and HBC have extended the time for submitting an application by another 21 days. Reasons for rejecting the extension of building on the site are listed below

- The area is green belt and permission for a recycling centre was mistakenly given in the first place.

- To enlarge the buildings would further compound the error and would not stop the offensive smells that intermittently make life a misery for Elstree and Borehamwood residents.
- The process of loading and unloading the removal lorries generates really horrible stench and must be a health hazard for staff and nearby households.
- It is dangerous to enclose rotting vegetation with an overheating and fire risk.
- The attempt to control the foul smell by extraction and filtration would probably be so costly as to render the whole enterprise uneconomic.



The link between the purple crocus and polio eradication

For many years infantile paralysis, or polio, was the scourge of the world.

Over 30 years ago Rotary decided it would work to eradicate it in the hope children of the future would not be at risk from the disease. Working with the World Health Organisation and national governments, and supported by the Bill and Melinda Gates Foundation, polio is no longer endemic in all but three countries, Nigeria, Afghanistan and Pakistan, and even in those countries the number of cases so far this year has been low.

So the task is nearly complete, but not quite. When mass vaccination has been carried out, children have a little finger dyed purple so the teams know that a child has received a dose of the polio vaccine.

Rotary's birthday is February 23rd; about that time croci are usually up in this country and the purple crocus has been adopted as a symbol of the success in eradicating polio.

Over the years the Rotary Club of Elstree and Borehamwood has supported the polio eradication programme and will be involved in the purple crocus project. The eleven primary schools have all received 500 purple crocus corms from the Club and members of the Club will be planting corms in front of the Civic Offices.



People of Elstree and Borehamwood rally around to send aid to Haiti

Yet again the population is in need of many things, one of which is shelter because homes have been destroyed by Hurricane Matthew.

The charity Shelter Box, a Rotary supported one, sends large green boxes that contain a ten-person tent, blankets and a range of other items to help people survive. The head of DHL was so impressed by Shelter Box that he allows the organisation to store 200 boxes in each of his company's 12 most strategically place warehouses around the world and with the help of airlines help usually reaches disaster areas quickly.

The supply of boxes needs replenishing and the Rotary Club of Elstree and Borehamwood has paid £600 to provide one box but the generous people of the town have been donating to enable the Club to pay for a second box.

The President of the Rotary Club, Nick Male, was collecting donations from people attending the 'Writing Show' at All Saints

Church on Saturday morning. Nick said 'People were being generous and I saw the parable of the widow's mite before my eyes'. Through Facebook others have indicated willingness to donate; others can contact the secretary of the Rotary Club via david.clout@btinternet.com

Members and friends of St. Michael's Church raised over £150 towards Shelter Boxes for the victims of the disaster in Haiti.

A Variety Night was organised by Pat Sperry and compered by Nick Male featured a wide range of local performers.

The audience thoroughly appreciated the evening, which ended with community singing, accompanied by the vicar, Rev. Louise Collins, on guitar with Andy Grady on the cornet.

The Mayor, Cllr Clive Butchins, and Councillor Pat Strack, both members of the Rotary Club, have been taking the Shelter Box collecting bucket to various events and the club is confident the people of the town will have paid for a second box.

Disability Games

On Sunday 16th October the North London Disability Games were held at Aspire Stanmore. This event has been supported by a number of Rotary Clubs for many years.

Borehamwood Rotarians Sasha Cappocci, Nick Male, Andy Grady and Pat Strack helped out on the day. Rotarian Clive Butchins attended in his role as Mayor and presented awards to the winners.

Both Mencap and the Visually Impaired Club sent competitors to the games.

John Cooper said "It was another wonderful day. I have won silver three years running, perhaps next year I will win gold!"



Leecliffe Big Local

This summer saw Leecliffe Big Local re-launch with a bang, hosting the area's first BMX racing event and a photo competition.

The Leecliffe Big Local is a £1 million investment, funded by the Big Lottery Fund. Consultation events to find out what the community would like the money spent on have been taking place over several months. The purpose of Leecliffe Big Local is to make a difference and leave a positive and lasting legacy in our local community.

The new plan has now been submitted to Local Trust for their formal endorsement and will be available for all to see at Leecliffe's Winter Glow event, to be held on Friday 9th December at Aberford Park.

Leecliffe's Community Development Worker Keely Yorke, who started in June, said "The Leecliffe Partnership have worked hard on the new plan. The Winter Glow evening in December will be one of the many ways Leecliffe aim to bring the community together and is a perfect way to celebrate the launch of the new plan. The summer events were only the start of some really exciting times for the area."

Chair person Donna Inwood said "We will be showcasing our plan at the Winter Glow event in December at Aberford Park. We would love the whole community to share in our exciting plans and hope to see as many of you as we can. Everyone is welcome to come down and see what we have in store!"



Earlier this year, Leecliffe Big Local agreed to work with Affinity Sutton as their Locally Trusted Organisation and to act as Leecliffe's bankers.

Affinity Sutton have also employed a Community Development Worker on behalf of Leecliffe Big Local, to help manage and deliver the plan.

To find out more information about Leecliffe Big Local, you can contact Keely Yorke on 020 87362 458, mobile 07718 120090 or by email Keely.Yorke@affinitysutton.com

Like us on Facebook www.facebook.com/Leecliffe-Big-Local-152224294954275/ and follow us on Twitter @leecliffebl



DR96

38 members and friends, all over 60, all town residents, went on a trip to Windsor for the day on Monday 3rd October.

They benefitted from a £300 grant from Hertsmere Borough Council Older Folks Week. The weather was perfect, blue skies and sunshine all day. After seeing the changing of the guard at the castle and having free time in the town the group met at the jetty to board the river cruiser. While the commentary was enjoyed, afternoon tea was served on the boat. Everyone agreed the sandwiches cakes and scones were delicious.



THE MONDAY CLUB

This new venture, which is a partnership between the Town, the Visually Impaired Club and Affinity Sutton was launched on the 1st July at Organ Hall Community Centre.

The club meets monthly and has met in August, September and October on the second Monday of the month. A varied programme of exercises, quizzes, speakers and entertainment is enjoyed by a growing number of members. Refreshments are served during the morning with soup and a roll now served for lunch.

All are welcome, contact 020 8207 0879 for more details.

YOU ARE INVITED!

THE MONDAY CLUB

Second Monday of the month
10.15am-12.30pm
Organ Hall Community Centre
37 Baird Close,
Borehamwood, WD6 4TB

FREE REFRESHMENTS PROVIDED

ACTIVITIES INCLUDE:
CHAIR EXERCISES AND SOFAS
BRIDGE
RISK & RUFFLE
£2.00 per person

For more information, call 020 8207 0879

Affinity Sutton | Local Trust | Leecliffe Big Local

Boreham Wood Football Club



Boreham Wood Football Club's Community Department are excited to announce a new disability group initiative within our increased community programme based at our Meadow Park home.

Following on from the success of our first ever Disability Football Festival in partnership with the Herts FA earlier in the summer, BWFC's Community Department have now teamed up with Hertsmere Mencap and the Borehamwood Day Centre to deliver a weekly inclusion session onsite at Boreham Wood FC. Back in July, 'Wood' welcomed over 100 players, carers and parents to participate in the Herts FA monthly Disability Football Festival.

It was the first time as a club that we have ever teamed up with the Herts FA to host such an event and it proved incredibly successful. Disability groups from all over Hertfordshire were welcomed to Meadow Park in what was a thoroughly enjoyable event for all.

Since this event, BWFC and Herts FA staff have been working closely to start up a weekly disability session onsite at the Club in

conjunction with the Hertsmere Mencap and Borehamwood Day Centre groups in October. The groups finally came together for the first time, which again proved to be hugely successful and was enjoyed by all. Community Head Coach Cameron Mawer commented "This was an initiative that we set out in our development plan last year.

"We hadn't previously worked with disability groups and we were very keen to start an inclusive partnership with both the Herts FA and local groups.

"If we get it right, It really could be such an amazing collaboration and so worthwhile. Not only are we working with these local groups, but our coaches are gaining experience from Herts FA coaches to develop their own coaching skills in respect to disability football."

For more information about this session including participation, please contact the Community Department at the Club on 020 8953 5097.



**BOREHAM WOOD
V SUTTON UNITED**

TUESDAY 22nd NOV - KICK OFF: 7.45pm



**BOREHAM WOOD
V BRAINTREE TOWN**

TUESDAY 29th NOV - KICK OFF: 7.45pm

Pounds and Ounces, 'Tanners', 'Ha'pennies' and 'Joeys' in Elstree and Borehamwood Museum

A surprise for the youngest visitors to the museum is their visit to 'Hanson and Maude's', the recreated tea and sweet shop run by Mary Hanson and her family for many years, and a must for the shoppers in Shenley Road.

Today they are presented with weighing scales in imperial measures and a mechanical till filled with pounds, shillings and pence – and can enjoy weighing out and taking away a quantity of sweets from their visit.

The museum volunteers are now looking forward to our next exhibition where we will display a century of migration into our town, with its transformation from the hamlet around Theobald Street, to a village, into the town we live in today.

From Village to Town opens on January 17th and will run until July alongside our permanent exhibition. We would like to thank the many people who have contributed the stories of their family's arrival in Elstree and Borehamwood and their impressions – which will be



featured in an accompanying video and on listening posts as part of our display.

What we now need are objects! In particular we need objects from the 1920s, 1930s and 1940s. If you have any items related to you and your family's time in Elstree and Borehamwood during this – or any other era – we would love to hear from you...

Friends of the museum met for one of their regular Friends Evening events on September 27th, where we were royally entertained by Fred Thomas of Borehamwood Ironmongers, interviewed by Maureen Corman on the highlights of his

life and times. The next event takes place in the New Year – see details in the next Friends Newsletter.

New dates for the popular Going Down the Village reminiscence meetings are December 1st, February 2nd and March 2nd, details on the poster below.

The museum opens Tuesday-Thursday 12noon - 6pm and Saturday 10am - 3pm and welcomes new volunteers. Call 01442 454888 or call in. More information about the museum can be found at www.elstree-museum.org.uk

Elstree & Borehamwood Museum invites you to:

GOING DOWN THE VILLAGE!

A monthly reminiscence meeting for the over 60s at 96 Shenley Road

FREE ENTRY

Meetings for 2016/2017:
 Thurs, December 1st (No meeting in Jan)
 February 2nd & March 2nd
 (from 10:30-11:30am)

Come and share your memories of Elstree & Borehamwood

Tel: 01442 454888 (Tues-Thurs 12-6pm, Sat 10am-3pm for further details)
 Website: www.elstree-museum.org.uk Registered Charity No 102779

From Village TO TOWN

Celebrating a Century of Migration!

The Museum is planning a major exhibition to celebrate the rich and diverse communities of Elstree & Borehamwood

We would love to hear your stories!

- When and why you settled in the area
- Your memories of Elstree & Borehamwood

Interested? You can do any of the following:

- Email the museum at info@elstree-museum.org.uk
- Share your story via Facebook ([Elstree and Borehamwood Museum](https://www.facebook.com/ElstreeandBorehamwoodMuseum))
- Visit the museum at 96 Shenley Road (opening times below) and speak to one of our volunteers

Tel: 01442 454888 (Tues-Thurs 12-6pm, Sat 10am-3pm) for further details
 Website: www.elstree-museum.org.uk Registered Charity No 102779



Nelken JEWELLERS
THE GUILD OF MASTER CRAFTSMEN

Specialist Repairs & Renovations
to all Diamond & Gold Jewellery
for over 120 Years...

83 Shenley Road Borehamwood Hertfordshire WD6 1AG
Tel: 020 8953 2727 email: nelken.jewellers@hotmail.co.uk

Save up to **70%** by **REFILLING**
your empty Printer and
Toner Cartridges



The Ink Lab

38 Shenley Road Borehamwood
020 8207 4999 www.theinklab.co.uk

The Friends of Care Homes

In Concert with Families, Friends and Carers
Supporting Families and All Who Care for Those with Alzheimer's and Dementia,
including all residents in Care Homes, Assisted Living Accommodation, our
Seniors, the Lonely and the Isolated - We are here for YOU!

An Evening Out In The Afternoon

At Phillimore Court Community Hall,
Phillimore Place, RADLETT, Herts WD7 8NN **3pm To 4:45pm**

The Friends of Care Homes
Supporting The Community of Radlett,
Borehamwood & It's Surrounding Areas,
52 Weeks Of The Year

Only £4 per person

The Place To Be On A
Sunday Afternoon

Can't get to us on Sundays ?

We can pick you up in our Minibus and drop
you off home again after the Event for just
£7 per person. These costs include the event
and Refreshments.

We Also
Produce Regular Events
Inside Care Homes
Supported By Families
Friends & Residents

**Call Us!
For a Lift**

We Offer Live Entertainment **Every Sunday**. Games, Sing-alongs,
Dancing, If You Are Able, Tea/Coffee, Cakes & Sweetsies. Plus a
Complimentary Sherry On Arrival.
Finishing With Our Ever Popular **Raffle**.

Everyone is Welcome

Volunteers To Help
Make The Afternoon
Worth It

contact us:- tel: **01923 289890**
or email: info@friendsofcarehomes.com or visit
our website www.friendsofcarehomes.com

**TUITION FROM AN
EXPERIENCED ENGLISH
LANGUAGE TEACHER**

- Improve your work prospects
- Give your child the best chance
in life
- Help with writing important
documents

Call Robert on
07506 064 268
or email
goodenglish@effigacy.co.uk
for more details about
group or individual lessons

**ALLUM HALL &
MANOR HOUSE**

For Events large or
small our spacious hall
and the house are ideal
for Celebrations,
Business Meetings,
Training, Club
Evenings etc. Seating
up to 470 in the Hall
and 50 in the house.



T: 020 8953 3415 • E: contact@allumhall.co.uk
www.allumhall.co.uk

Honest2GoodnessBakery.co.uk
Speciality Cakes for Every Occasion
And on Facebook: [honest2goodnessbakery](https://www.facebook.com/honest2goodnessbakery)



Most diets catered for including:
Gluten Free, Wheat Free, Sugar Free, Dairy Free
Contact Anne to discuss your needs and to
get a quote

07432 113 197

Fairway Hall

This attractive and modern facility has a fully equipped kitchen, cloakroom, toilets
and a stage - making it ideal for weddings, barmitzvaahs, children's parties, celebrations,
social occasions, lectures, meetings and amateur dramatics.

For more information, please call **020 8207 1382**



www.elstreeborehamwood-tc.gov.uk

What's on

DR96 Over 60s Club

Wednesdays 10am - 12pm

96 Shenley Road

New members welcome.

Contact: Clive Butchins 020 8953 1827,
Sandra Parnell 020 8953 0832 or
Pat Strack 020 8386 3151

Friends of Care Homes

Weekly Sundays from 3pm to 4:45pm

'An Evening Out in the Afternoon'
Radlett

Tel: 01923 289890

Royal British Legion Club

289, Shenley Road, Borehamwood

Wednesday 23 November

Pensioners Party

3pm to 6pm

Tickets £4 members £6 non members

Saturday 26 November

The famous 60s group 'Chicory Tip'
and a Fish and Chip Supper

Tickets £10 members £12 non-members

Friday 9 December

Funtasia Charity night

Ticket only but tickets are free and limited
(available in November from the Legion)

Saturday 10 December

Entertainment from the 'New
Honeycombs'

Ticket prices TBA

31 December

New Year's Eve

With the band 'Track Box'

Tickets will be £10 Members and
£12 Non-members (vetted)

All tickets can be purchased at the RBL
Club from the Club Steward Wayne or any
of the club committee

Borehamwood WI

Meet at Room 1, 96 Shenley Road on 2nd

Monday monthly 2pm - 4pm

Monday 14 November

Flower Arrangements

Monday 12 December

Christmas party with the Woodmen
folk group

From January 2017 we will be meeting in

Fairway Hall at 1.30pm

For more details call Janet Martin on
020 8386 2844 or Florrie Cowley on
020 8386 7371

Sunday 20 November

NSPCC Christmas Craft and Gift Fair

Allum Hall, 10:30am - 3:30pm

Contact: Ann Goddard
anngoddard999@hotmail.com

Sunday 20 November

Quiz

St Michael's, 2:30pm

Contact Pat Sperry 01923 673 959 or
07939 130871

patsperry@talktalk.net

Saturday 26 November

Xmas Fair

St Michael's, 11am - 2pm

Contact Pat Sperry 01923 673 959 or
07939 130871

patsperry@talktalk.net

Saturday 26 November

Rotary Concert

Allum Hall, 7pm - 9pm

£10

Sunday 27 November

Mitzvah Day work parties

11am - 1pm

Scrub clearance between Barnet Lane and
Carrington Avenue. Pond clearance litter
picking vegetation clearance

Contact pat.strack@ntlworld.com

Sunday 27 November

Christmas Light Switch On

All Saints Church, 2pm - 6pm

Saturday 3 December

CAH Arts & Craft Fair

Allum Hall, 10am - 4pm

Monday 5 December

ACPT Ltd AGM

Allum Hall, 7.30pm

Contact pat.strack@ntlworld.com

Wednesday 7 December

BBC Elstree Concert Band

Allum Hall, 8pm

£6, (see page 5)

Monday 12 December

Coach trip to see Christmas Lights

4:30pm return by 9pm

Stop at Covent Garden for supper

Contact pat.strack@ntlworld.com

£12

Wednesday 14 December

DR96 Xmas party

Full Christmas Dinner, entertainment and
dancing

96 Shenley Road, 11am - 3pm

non members £10

Saturday 17 December

Carols by Candlelight BETTA

St Michaels Church, Brook Rd, 7pm - 10pm

Elstree & Borehamwood Light Operatic Society 'CHRISTMAS MAGIC'

An evening of Fun and Laughter

Fairway Hall

Saturday 3 December

8pm doors open 7.45pm

Sunday 4 December

6.30pm doors open 6pm

Bring your own drink and glass.

Refreshments available

Contact: Marianne 07888 741208

Tickets £7

Lights of Love

A community event
to remember and celebrate
the lives of loved ones

Wednesday 7th December 2016

7pm for 7.30pm

Outside Watford Town Hall

Churchill's Confectionery

Churchill's Confectionery was founded by Allan Bodnitz in 1989 and has now grown to be a successful family business including his two daughters, Emma Bodnitz and Kim Winston.

Churchill's specialises in creating beautifully designed collectable gift tins and cartons. These contain high quality, fashionable and classic confectionery and biscuits. The key to our success is the unique detailed embossing on our tins which complements the artwork for which we have won awards.

We have 35 loyal staff many of whom have been with us for over 20 years. The business turnover is £3.8 million and is structured into three parts, namely UK, Duty Free and Export. Within the UK, our market ranges from high end stores to garden centres, high streets shops, smaller outlets across the country as well as on television.

The Duty free sector is largely focused on the UK mostly driven by our souvenir range. The largest sales are from Duty Free stores supported by cruise-liners, ferries and smaller outlets around the world. Our export division is headed by our energetic sales manager who travels around the world meeting customers in their partnership territory. At present, Churchill's has working partnerships with 45 countries worldwide. Depending on the country, we collaborate with distributors or agents and in many cases we supply directly to big chain stores, department and high-end stores as well as boutiques. This year our products will be

launched on two European television channels. At present, our export focus is in the growth of the US market.

We have a strong and loyal customer base driven by the tourist sector. We often hear from someone who has collected a range of our tins over many years. So we know that the love, time and craftsmanship that we put in each product is worth it.

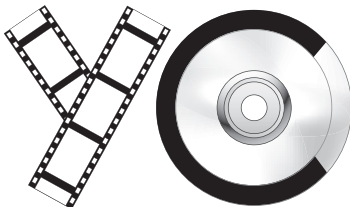
2017 is going to be another exciting year with the launch of six new designs. They will not just be adding to the Churchill's Confectionery range but enhance and complement some of our other ranges. We will also be launching our new e-commerce website which we hope will give us direct presence and contact with our loyal customers.

Feel free to visit our website www.churchills-confectionery.co.uk

Churchill's Confectionery Ltd, Borehamwood, Hertfordshire WD6 2HP



ELSTREE & BOREHAMWOOD



YOUTH COUNCIL

I have been part of the Elstree and Borehamwood council for a long time, 5 years!

I have seen people come and people go, and have been a part of something which has a

say in our local community. I have seen people grow up. I am moving on myself now, and am saying goodbye to the Youth Council.

For the past year I have been the Chairman, which means that during our meetings, I over-viewed the ideas brought up and planned by the Youth Council and put them forward to Councillors to see them come to fruition. For example, we wished to improve the appearance of the Borehamwood train station, and so with the collaboration of the First impressions project, we were able to have new benches installed around the station, have planters installed with flowers and flora just outside of the station, and also have aesthetically unpleasing aspects, such as upturned mud around the train station covered up with bark, making the overall appearance of the station more welcoming and up kept.

In the past, the Youth Council has been responsible for the implementation of the Borehamwood Skate park, and has constantly been in touch with helping the local community, be in charity work and helping, and raising money for charities such as

Mencap. We have helped at a multitude of community events, and have donated £1,000 to the young carers project!

I would like to thank the town council for providing this amazing opportunity to the young people of Elstree and Borehamwood, it is a fantastic thing to have for those interested to be a part of.

The Youth Council is something which I am glad to have been a part of, it gave me a chance to express opinions about the local council, and gave me a chance to understand how internal affairs work, as well as educating me greatly about politics. Yet most important of all, it allowed me to meet some wonderful, like-minded people who have been fantastic to work with, and have become great friends.

We plan to continue working towards the betterment of our community, and you can also be a part of it!

It has been a wonderful time, and I wish that the Youth council continues to offer as much benefit and continues to operate just as well into the future.

Jackie Warman (Retiring Chairman)



Town Councillors

2016/17 Mayor: Cllr Clive Butchins
2016/17 Deputy Mayor: Cllr Eric Silver

Borehamwood Hillside



Sandra Parnell

cllr.sandra.parnell@elstreeborehamwood-tc.gov.uk
 020 8953 0832



Clive Butchins (Con) Mayor

cllr.clive.butchins@elstreeborehamwood-tc.gov.uk
 020 8207 1382



Pat Strack (Con)

cllr.pat.strack@elstreeborehamwood-tc.gov.uk
 020 8386 3151

Borehamwood Cowley Hill



Anna Coleshill (Lab)

cllr.anna.coleshill@elstreeborehamwood-tc.gov.uk
 07506 661756



Richard Butler (Lab)

cllr.richard.butler@elstreeborehamwood-tc.gov.uk
 07706 079439



Graeme Franklin (Lab)

cllr.graeme.franklin@elstreeborehamwood-tc.gov.uk
 020 8953 1973

Borehamwood Brookmeadow



Victor Eni (Con)

cllr.victor.eni@elstreeborehamwood-tc.gov.uk
 07884 056187



Cynthia Barker (Con)

cllr.cynthia.barker@elstreeborehamwood-tc.gov.uk
 07956 222422



Simon Rubner (Con)

cllr.simon.rubner@elstreeborehamwood-tc.gov.uk
 07870 648227

Borehamwood Kenilworth



Eric Silver (Con) Deputy Mayor

cllr.eric.silver@elstreeborehamwood-tc.gov.uk
 07846 983595



Gary Silver (Con)

cllr.gary.silver@elstreeborehamwood-tc.gov.uk
 07710 156629

Elstree



Anne Mitchell (Con)

cllr.anne.mitchell@elstreeborehamwood-tc.gov.uk
 020 8953 2223



Farida Turner (Con)

cllr.farida.turner@elstreeborehamwood-tc.gov.uk
 07977 380173

Information on local groups is available at <http://www.elstreeborehamwood-tc.gov.uk/index.php/yourtown/local-groups>

Elstree & Borehamwood Town Council meetings

For a full list of our forthcoming meetings, please see the website.

All meetings now take place at Fairway Hall.

22 November	Environment & Planning	Meeting Room	7pm
10 January	Entertainments	Meeting Room	7:30pm
11 January	Full Council	Main Hall	7:30pm
17 January	Environment & Planning	Meeting Room	7pm
25 January	Business Forum	Main Hall	7:30pm
7 February	Entertainments	Meeting Room	7:30pm
9 February	General Management	Meeting Room	7pm
14 February	Environment & Planning	Meeting Room	7pm
22 February	Transport Forum	Main Hall	7pm

Note: Times and venues of meetings may be changed at short notice. Meetings listed are open to the press and public.

Contacting the Council Staff

Phone: 020 8207 1382 (all staff)

Address: Elstree & Borehamwood Town Council
 Fairway Hall, Brook Close, Borehamwood WD6 5BT

Website: www.elstreeborehamwood-tc.gov.uk

For information on the Town Crier, contact the editor below or for FAQs and guidelines visit our website

Huw Jones - Town Clerk

Email: clerk@elstreeborehamwood-tc.gov.uk

Tracey Malton - Deputy Clerk and Finance Officer

Email: finance@elstreeborehamwood-tc.gov.uk

Dan Salter - Events Officer and Town Crier Editor

Email: dsalter@elstreeborehamwood-tc.gov.uk

Jenny Simon - Mayor's Secretary

Email: admin@elstreeborehamwood-tc.gov.uk

Neil Robinson - Hall Supervisor

Email: caretaker@elstreeborehamwood-tc.gov.uk

Peter Digweed - Council Warden

Email: caretaker@elstreeborehamwood-tc.gov.uk





ELSTREE AND BOREHAMWOOD TOWN COUNCIL

CHRISTMAS LIGHTS SWITCH ON

Come and join

EastEnders & *Carry On* Legend



Dame Barbara Windsor DBE

Switch on this year's Christmas lights

Sunday 27th November 2016

All Saints Church, Shenley Road, Borehamwood
WD6 1EB

2pm – 6pm

(Light Switch On at 4:30pm)

Free Santa's Grotto · Free Kids Ride ·
Free Ice Skating · Borehamwood Rock Choir ·
Borehamwood Community Choir ·
The Rolling Base · Borehamwood Brass ·
Free Tea & Coffee

www.elstreeborehamwood-tc.gov.uk

Sponsored by

